


# RESIDENTIAL LIFE AT

*Emporia  
State*



EMPORIA STATE  
UNIVERSITY



An aerial photograph of the Emporia State University campus, showing various brick buildings, parking lots, and green spaces. The image is split vertically: the left half has a dark overlay with white text, and the right half shows the campus in full color.

Emporia State University  
Residential Life's **Vision** is to build  
a home of connection, belonging  
and legacy for you and your fellow  
students. Our **Mission** is to foster  
Hornet development through  
residential living that supports the  
individual and builds community.

### Our Values

- **Development.** We believe challenges are opportunities for empowerment and progress.
- **Inclusion.** We foster inclusive spaces, hire diverse staff and facilitate learning to inspire belonging and respect that support each individual.
- **People.** Rooted in human dignity, we prioritize serving the basic needs of those in our care.
- **Environment.** We strive to maintain an atmosphere of safety and efficiency.
- **Community.** Our community is cultivated by a commitment to physical setting, mutually shared experiences, communications and trust.

### Need more?

Daily campus visits offer you the chance to talk to an advisor about your future major, find out about scholarships and financial aid opportunities and see more of ESU's residential halls. Sign up at [emporia.edu/visit](http://emporia.edu/visit).



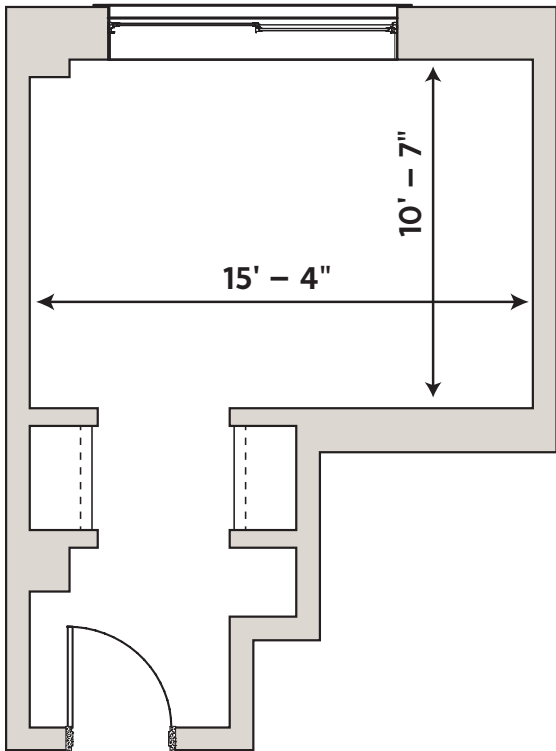


# ABIGAIL MORSE

Hall



Remodeled and re-opened in 2020, Abigail offers modern amenities combined with its original 1920's charm.



Abigail Morse

To learn more about Abigail Morse Hall and get a closer look, scan the QR code!





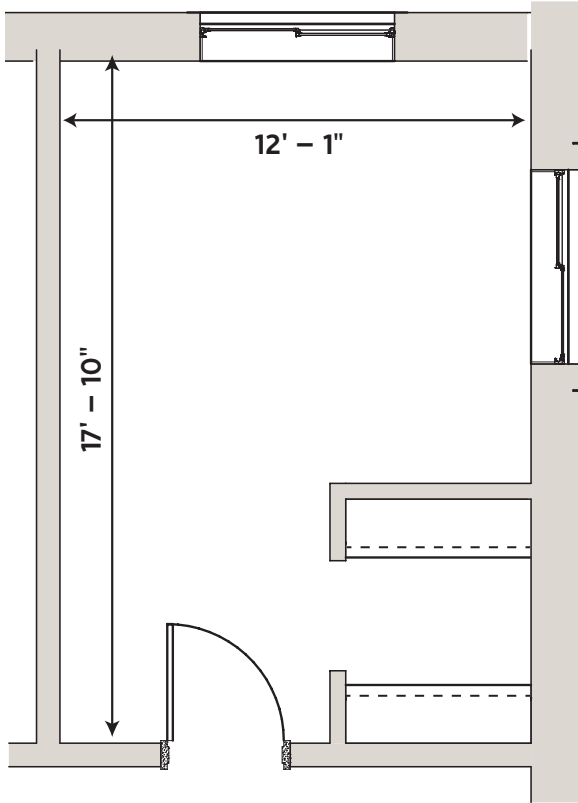


# SCHALLENKAMP

## Hall



Opened in 2019, Schallenkamp features a Learning Commons with flexible spaces for all majors.



Schallenkamp Double

To learn more about Schallenkamp Hall and get a closer look, scan the QR code!



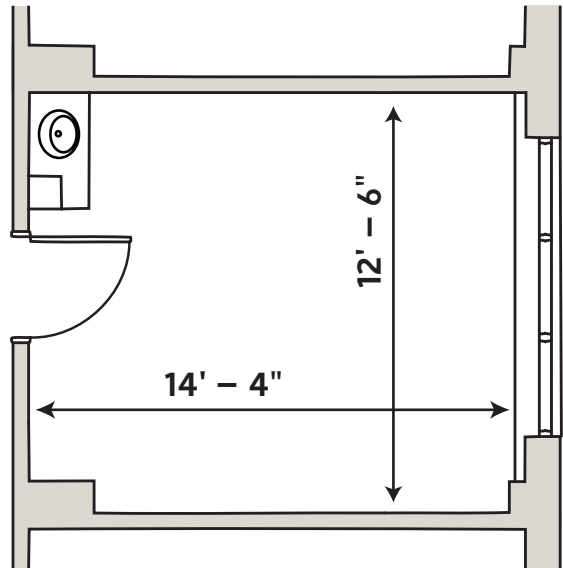




# SINGULAR + TRUSLER *Halls*



Sharing common spaces with North and South Tower, Singular and Trusler offer a mix of public and private spaces.



Singular & Trusler Double



To learn more about Singular and Trusler Halls and get a closer look, scan the QR code!



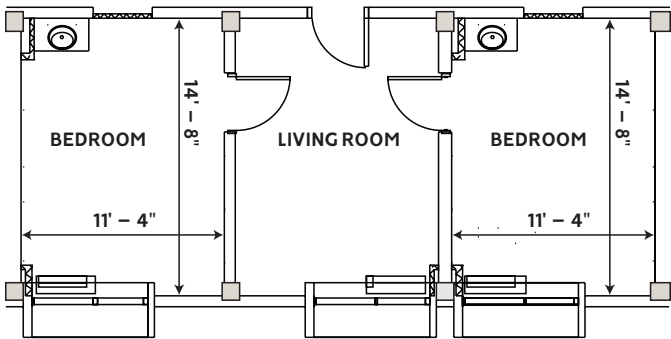




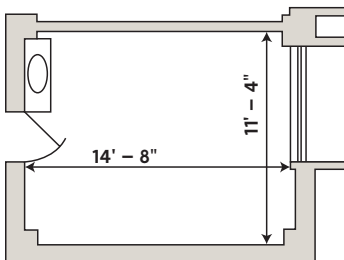
# NORTH + SOUTH Tower



Designed around central floor lobbies, North and South Tower combine to offer our largest living community.



North & South Tower Suite



North & South Tower Single/Double



To learn more about North and South Tower and get a closer look, scan the QR code!





# FIND THE *right* PLACE FOR YOU

Some amenities vary by hall, but regardless of where you live, you'll be part of a community of students and staff who call Emporia State home.

	Abigail Morse	North & South Tower	Schallenkamp	Singular & Trusler
Double Room (2 Residents)				
Suite (4 Residents)				
Single Rooms				
Single-Gender Communities				
Mixed-Gender Communities				
Community Study Rooms				
In-Room Sink				
Enhanced Temperature Control				
Room Storage	Dresser & Closet	Wardrobe	Dresser & Closet	Wardrobe

## Universal Features



Community Bathrooms



Wi-Fi & Ethernet



Furnished Rooms



On-site Free Laundry



Community Kitchen



Reception Center

**We know what you're thinking.**  
*How much is all of this going to cost?* For information about the finances of living on campus, scan the QR code.



## Make Connections

Our Themed Floor Communities (TFCs) foster connection, learning and personal growth through intentional experiences and interactions. TFCs allow residents with similar interests or majors to integrate living and learning. Some examples of previous TFCs include:

- Business
- College Transition
- Diversity, Equity and Inclusion
- Education
- Honors
- Nursing

## Timing is everything

The housing application seems like a lot of steps to keep track of, but we're here to make it easy.

October

Housing Application part one opens. This is where you give us your contact information and let us know what hall you're hoping for.

February

Housing Application part two opens. Here you will complete the application and make your prepayment. Check [emporia.edu/reslife](http://emporia.edu/reslife) for more information.

May

Housing Application Priority Date is May 1! Complete your application by this date to be in the first round of housing assignments.

June/July

Room and roommates are assigned. Check your student email for a notification about your room assignment, roommate pairing and information for moving in.

August

Move-in day! Stay in the loop by checking your student email, watching the Residential Life social pages and communicating with your roommate.

Dates on this page are subject to change. For more information, visit [emporia.edu/reslife](http://emporia.edu/reslife).

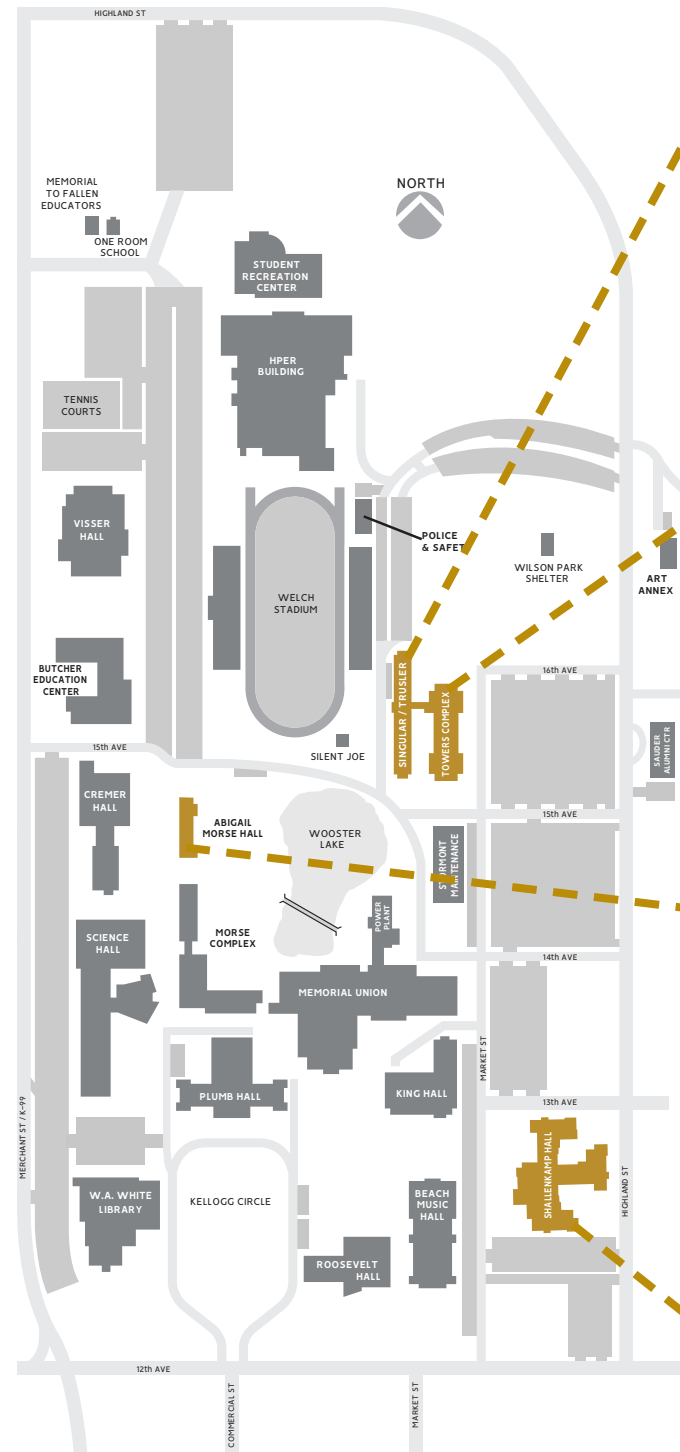


**Did you know?**  
Residential Life has around 50 student employee positions. Not to mention, offices all around campus hire students for a number of jobs. Learn more at [emporia.edu/careerservices](http://emporia.edu/careerservices).

**Ready to apply?**  
Scan the QR code to get started.



# You ARE HERE



# More THINGS TO CONSIDER

## DINE WITH US!

ESU Dining has multiple meal plan options for you to choose from.

## CHECK IN WITH THE STUDENT WELLNESS CENTER!

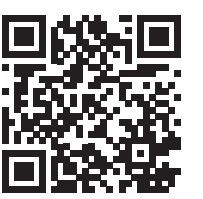
See what information you need to provide before move-in and how they can help support your health throughout your time at ESU.

## PUT YOURSELF OUT THERE!

The Center for Student Involvement can help you meet new people and get involved on campus. Check out all the Welcome Week and Orientation events – you'll feel right at home in no time.

## BUT WAIT, THERE'S MORE!

See all the student services available to you – from where to work out to how you can get help with your biology homework. Find it all by scanning the QR code.





# EMPORIA STATE UNIVERSITY

## Contact us!


Residential Life


620.341.5264

reslife@emporia.edu

emporia.edu/reslife

 @ESUResLife

 @emporiastatereslife

 @esureslife

