

EMPORIA STATE UNIVERSITY

SKILLETT RETIRES AS DEAN OF THE TEACHERS COLLEGE

THE TEACHERS

In the early 1980s, education as a whole was being closely scrutinized and often criticized. "A Nation at Risk" was hot off the presses and a national effort was launched to improve our schools and raise the level of student achievement.

Schools of education were not immune. Emporia State University's College of Education needed a new dean who was an experienced educational leader, knew Kansas, was aggressive, and had vision.

Dr. John Visser, president of Emporia State University from 1967 to 1984, found just such a leader in Dr. Jack D. Skillett. Skillett had been a member of the ESU faculty since 1978. He was familiar with Kansas and had a proven track record. He had served as superintendent of three Kansas unified school districts, was the director of ESU's Center for Educational Research and Service, and was the president's special assistant for legislative affairs. But most importantly, Skillett had vision. He knew ESU's history as a state leader in preparing teachers, administrators, counselors and other school personnel, and he had a plan for making ESU a national leader in the area of teacher education.

As the new dean, Skillett's first priority was to strengthen the college's enrollment so funding could be stabilized. Also, the college's position within the university and the state of Kansas needed to be enhanced.

"In the early '80s, we were faced with several major issues. Two of the most pressing were interrelated, enrollment and state funding. Thanks to the strong leadership of President Glennen, faculty, and administrators throughout the campus, we were able to stabilize the university's enrollment and reduce the operating budget by more than one million dollars. Those were difficult years, but they also provided us with numerous opportunities to re-think the direction of the university and pursue new program initiatives," said Skillett.

In an effort to strengthen the college's programs and save money, Skillett led a review of the goals and objectives of Butcher Children's School, the only laboratory school in Kansas, and negotiated an agreement between Emporia USD 253 and the university to jointly operate the laboratory school.

"This arrangement allowed the university to continue to maintain a laboratory school on campus which was closely tied to The Teachers College and its elementary education preparation program. Since the inception of the agreement, numerous program

modifications have been made, more than \$500,000 of renovation projects have been completed, and the laboratory school has been placed on an extended school year calendar," said Skillett.

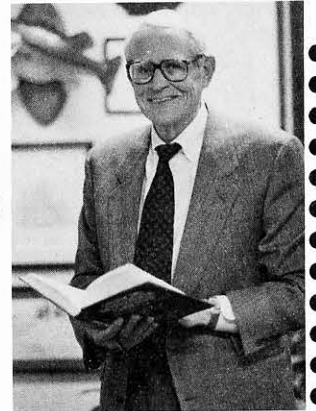
Butcher Children's School is one of only two elementary schools in the state of Kansas operating on an extended year basis. Butcher Children's School program begins August 1 and concludes June 30.

A second initiative that proved to be important to The Teachers College took place in 1985. Thanks to the effort of President Glennen and a willingness

on the part of former Governor John Carlin, more than \$240,000 in new program enhancement funds were targeted for The Teachers College. The Teachers College was the only college of education in the state of Kansas to receive money for program enhancement, and the funds provided a desperately needed increase in the resource base of the college.

"Without question, those funds provided the necessary fuel for us to strengthen our programs, increase our national visibility, achieve national accreditation, and begin the journey toward the establishment of premier education programs. Our enrollment increased, faculty positions were added, and more importantly, we were able to begin a number of new programs which contributed significantly to our ability to meet students' needs," Skillett reflected.

During the 1986-87 academic year, Skillett also recommended that the college's name be changed. With the president's support, Skillett proposed that the College of Education be renamed The Teachers College so that the college could build on several decades of name recognition (Kansas State Teachers College) and focus on the rich heritage of the institution in the area of teacher education.



Dr. Jack D. Skillett, after serving 12 years as dean of The Teachers College, is stepping down at the end of the 1995 summer session. During his tenure, enrollment in The Teachers College increased, exit standards were bolstered, and The Teachers College received numerous honors and awards.

FAREWELL -- THANK YOU!



As announced last fall, I have decided to step down as dean of The Teachers College at the end of the 1995 summer school session. I do so with a sadness and yet a feeling of celebration. Sadness, because I will be leaving the helm of one of the finest colleges in the nation -- a college that has an exemplary faculty,

academically talented students, and a loyal alumni.

During the last 12 years as dean, we have been afforded numerous challenges--yes opportunities, implemented a significant number of new programs, received four national awards, and experienced unparalleled growth in student enrollment--nearly forty percent since 1986. We have renamed the college--The Teachers College--so we could recapture the rich heritage of our past. And more importantly, we have provided thousands of students among the finest educational opportunities in the nation. Indeed, The Teachers College is one of the finest in the nation. It is a college with a spirit, destiny, an unparalleled commitment to excellence, and an appreciation of its past. It has the very best in faculty, staff, and students.

It also is with a sense of celebration that I step down as dean. A sabbatical leave during the fall semester will provide me with a unique opportunity to visit charter schools throughout the nation and study the privatization of schooling movement that is now under way. I also will have time to finish the last part of a six-part series on

Kansas education reform that currently is being published. And, I will be preparing materials for a graduate law class that I will teach in the spring semester as a part-time faculty member. But, perhaps most of all I will have an opportunity to let the fires rekindle and prepare for a new career. . . as a fishing guide, a businessman, a state-elected official, or being just a darn good grandfather.

After some 32 years of public service to this state: two as a teacher, 13 as a superintendent, five as a professor and director of a research center and 12 as dean, I know that Emporia State University is one of the finest universities in the nation. As a graduate of (MS '64) and as the dean of The Teachers College, I wish to say . . . thank you Emporia State University for preparing me for and providing me with the opportunity to serve the teaching/administrative profession of this great state. And, yes, thank you alumni for caring.

Jack D. Skillett, Dean

— continued from page 1 —

During Skillett's tenure, The Teachers College also received funds from the Walter S. and Evan C. Jones Trust to permanently endow the Center for Educational Research and Service and rename it the Jones Institute for Educational Excellence. The endowment provides for a visiting distinguished professor each year and sponsors an annual distinguished lecture series.

Between 1984 and 1986, the enrollment of The Teachers College stabilized. By 1994, student enrollment had increased 40 percent, and summer school enrollment was up 39 percent from the mid-1980s.

Since 1985, The Teachers College has received four national awards, three American Association of State Colleges and Universities (AASCU) Christa McAuliffe Showcase for Excellence Awards, and one Association of Teacher Education (ATE) Distinguished Program in Teacher Education Award. In 1985 The Teachers College received a Christa McAuliffe Showcase for Excellence Award for its "Partnerships" program which was designed

to strengthen relationships with public schools. In 1986, ATE honored The Teachers College for its "Connections" philosophy of collaboration in its teacher preparation program. In 1987, The Teachers College was honored by AASCU with a second Christa McAuliffe Showcase for Excellence Award for its "Project to Determine the Quality of Schools." In 1989, The Teachers College was honored a third time by AASCU for its "Summer Academy for Future Teachers" program.

Skillett also has been a strong advocate for increasing the admissions and exit standards for students in The Teachers College. As of today, ESU has the highest standards in teacher education in Kansas.

"It really is an amazing feat for The Teachers College to be able to raise the standards and experience major growth at the same time. It is a real tribute to the institution and to the considerable strength of our faculty and programs," said Skillett.

As dean, Skillett established a number of recognition programs. The Teachers College Honors Banquet, which annually recognizes students for academic excellence, is in its 11th year. Each year,

faculty are recognized in the areas of instruction, research and service with The Teachers College Faculty Recognition Awards. Skillett also established the Dean's Fund for Faculty Creativity which provides small grants to faculty members for research and special projects.

As a researcher and scholar, Skillett has served several governors and the state of Kansas. In 1979 the first "Teacher Supply and Demand in Kansas Public Schools" was published. In its 16th year, this annual study provides school administrators, state legislators, schools of education, and prospective teachers with valuable statistics regarding teaching opportunities and shortages. In 1980, Skillett conducted the first "Kansans' Attitudes Toward Education" (KATE) study. Designed to determine the attitudes of Kansans towards the public schools in their communities, the study is now conducted biennially. In the fall of 1982, Governor Carlin asked Skillett to analyze the ACT scores of graduates of Kansas Regents' Institutions from 1973 to 1983. The study was published in December of 1983. In 1989, Skillett was commissioned by Governor Mike Hayden

— continued on page 5 —

DIVISION OF PSYCHOLOGY AND SPECIAL EDUCATION HIGHLIGHTS GRADUATE PROGRAM CHANGES



The division of psychology and special education offers the master of science degree in psychology with concentrations in clinical, general experimental, and industrial/organizational; special education with concentrations in behavior disorders, interrelated, learning disabilities, mental retardation, and gifted, talented, and creative; school psychology and art therapy. The education specialist degree in school psychology also is available.

Our graduate offerings have traditionally enjoyed solid enrollments, fueled by the outstanding faculty and excellent professional training. Over the past four years, however, the division has experienced unprecedented growth in the number of students entering the art therapy and clinical psychology programs, stretching faculty resources and ballooning class sizes to the point that the faculty reasserted its commitment to quality programs by deciding last year to cap enrollment. Effective for the 1994-95 class, 25 new clinical psychology students and 15 new art therapy students are admitted annually.

Capping enrollments requires a different review approach. Rather than evaluating admission materials continuously, student folders are now reviewed in March, June, and October. Pooling students allows graduate admissions committee members to rank the applicants and select the most qualified candidates instead of accepting everyone who satisfies the admission criteria. Once identified, these candidates are contacted immediately to maximize the likelihood of their coming to ESU. A group of alternates helps ensure that the incoming class meets the cap. Quality is well-served by capping enrollments with a process that

allows us to accept the best applicants. I add that successfully attracting the best undergraduate and graduate students for any of our academic offerings is often contingent upon scholarship availability. Your financial gifts to the university ensure our competitiveness in this important endeavor.

The industrial /organizational and school psychology programs also have experienced dramatic growth with enrollments almost doubling in the past five years. Although there is no cap, the faculty are committed to quality and willing to make the necessary decisions.

Several other graduate offerings will be affected by newly developed teacher certification requirements. The Kansas State Board of Education and the Teaching and School Administration Professional Standards Advisory Board have directed a redesign of educator preparation and licensure. Faculty members from throughout the university are serving on committees developing discipline-specific outcomes for knowledge, performance, and disposition, with public hearings conducted throughout the state as the penultimate activity prior to final recommendations coming late this spring.

The plan being advanced for special education is to consolidate all previous certification areas (e.g., behavior disorders, learning disabilities, mental retardation; and gifted, talented, and creative) to two, adaptive and functional. The faculty already has begun addressing the implications of these changes on our undergraduate and graduate course offerings, our graduate degrees, and our projected staffing needs.

Your questions and comments about any of our undergraduate and graduate programs in the division of psychology and special education are always welcome, and I certainly request that you encourage students and colleagues to further their education at Emporia State University. The division office's phone number is 316-341-5317, and a variety of materials describing our various degree programs also can be requested.

Sincerely,

Kenneth A. Weaver

Ken Weaver,
Chair, Division of Psychology
and Special Education

WEAVER NAMED CHAIR OF PSYCHOLOGY AND SPECIAL EDUCATION DIVISION

Dr. Kenneth A. Weaver, associate professor in the division of psychology and special education, was named chair of the division of psychology and special education. He replaced Dr. John O. Schwenn, who became the associate vice president for academic affairs and the dean of the graduate school in November of 1994.

Weaver joined the faculty of The Teachers College in 1986. He received a bachelor's degree in biology in 1973, and a master of education degree in 1979, both from the University of South Carolina; a Master of Arts in 1983, a master of philosophy in 1984 and a doctorate in educational psychology in 1986, all from Columbia University. He worked in rural public health for two years in the Philippines as a Peace Corps volunteer, and taught seventh and eighth grade science for five years in South Carolina. He currently is certified in middle and high school science and psychology.

In 1994, Weaver received the Faculty Recognition Award for Service. He served as the director of ESU's Honors Program for three years, and in 1992 served as the director of the Kansas Regents Honors Academy.

Weaver's current research interests are mood and memory, eyewitness memory, and learning statistics. He is president-elect of the Council of Teachers of Undergraduate Psychology and is a member of the Executive Council of the Southwestern Psychological Association.

1995 FACULTY RECOGNITION AWARD RECIPIENTS

The Teachers College at Emporia State University honored four faculty members recently for outstanding achievement in the areas of teaching, research and service. Dr. Leo W. Pauls, Executive Director of the Jones Institute for Educational Excellence, announced the recipients of the 1994-95 Faculty Recognition Awards during The Teachers College spring faculty meeting.

According to Pauls, the recipients were nominated by their respective academic divisions in The Teachers College and then selected by a university-wide committee.

"The recipients this year are truly outstanding in their respective disciplines and have contributed so much to The Teachers College and Emporia State University," said Pauls.

Dr. David F. Bateman, assistant professor in the division of psychology and special education, received the Faculty Recognition Award for Instruction. He was recognized for his enthusiasm, humor, and sensitivity to students' needs. As one student noted, "He is knowledgeable in all areas of special education and shares that knowledge and his own experiences with us. After I graduate, I know Dr. Bateman will be available to me for advice and consultation."

In his third year at ESU, Bateman earned his Ph.D. in special education from the University of Kansas, where he was a research assistant for the Beach Center on Families and Disability at the Schiefelbusch Institute for Life Span Studies.

Dr. Teresa A. Mehring, associate professor and associate dean of The Teachers College, was honored with the Faculty Award for Scholarly Activity. In the past two years, Mehring has generated, or assisted in generating, 11 grants from university, state, federal and private foundations, totaling more than \$350,000. Most recently, she has conducted research on the effectiveness of teacher training in ESU's Professional Development School program in Olathe, Kan. She also has studied the effectiveness of drug education programs, and the effects of labeling on gifted and non-gifted students' self-esteem.

Mehring has written five book chapters, one nationally distributed study, three refereed journal articles, one newsletter publication, three videotapes, five textbook reviews for national publication companies

and one edited book. She has presented at 10 national and international conferences and at 18 state/regional conferences.

Mehring received her doctoral degree and a Master of Science in Education degree from the University of Kansas. She also earned a master's degree in counseling psychology from Southwest Missouri State University, and received Bachelor of Music, Bachelor of Music Education, and Bachelor of Arts degrees in applied music, music education, and psychology from St. Mary College in Leavenworth.

Dr. John O. Schwenn, former chair of the division of psychology and special education and now associate vice president for academic affairs and graduate dean, received the Faculty Recognition Award for Service. Schwenn was twice elected president of the Learning Disability Association of Kansas, and has held offices on the Council for Exceptional Children since 1991. He was appointed by the Commissioner of Education as the representative of all Regents institutions to the Comprehensive System of Personnel Development Committee. He is a consulting editor for the journal, "Intervention in School and Clinic," and serves on the editorial board of the "Journal for Culturally and Linguistically Diverse Exceptional Learners."

Schwenn joined the faculty of The Teachers College in 1989 and became division chair in June 1992. He received his doctorate in rehabilitation and special education in 1976, from the University of Wisconsin-Madison. Schwenn also received the Faculty Recognition Award for Scholarly Activity in 1994.

John Baxter, athletic trainer for ESU, received the Darrell E. Wood Service Award. "Doc" Baxter was honored by his peers for his "total commitment to professionalism and devotion to Hornet athletics." As the "caretaker" of ESU athletes since 1966, Baxter has worked with students and faculty from across campus. He also has worked with area high school coaches and students, served as the coordinator for the athletic training facilities at the NAIA National Basketball Tournament in Kansas City, Mo., and was elected to the NAIA Hall of Fame in 1986.

Baxter received a Master of Science degree in 1966 from ESU and a Bachelor of Science degree in 1962 from the University of New Mexico.

GUZZETTA NAMED JONES DISTINGUISHED PROFESSOR



Dr. Dominic J. Guzzetta, a former university administrator, is the Jones Distinguished Professor for the 1995 spring semester.

Guzzetta is President Emeritus and Professor of Higher Education Emeritus of the University of Akron in Ohio. Guzzetta served as president of the University of Akron for 13 years and as president of Marian College in Indianapolis, Ind., for three and a half years.

Prior to becoming a university and college president, Guzzetta served as an administrator and professor at the University of Akron for 14 years. He began his career in education as a secondary school teacher at Marion Central School in New York. Most recently, Guzzetta was the Distinguished Resident Scholar in Higher Education at New Mexico State University from 1989 until 1994.

Guzzetta received bachelor's and master's degrees from the University of Buffalo in New York. He was awarded a doctorate in higher education and educational administration from the University of Buffalo.

Guzzetta's honors include five honorary degrees: Doctor of Laws from the University of Akron, Kent State University, and Bellevue College, Doctor of Humane Letters from Walsh College, and Doctor of Social Science from Marian College. Guzzetta also has been named to "Who's Who in America," "Outstanding Educators in America," and "Leaders in Education."

During his tenure as the Jones Distinguished Professor, Guzzetta is team teaching two graduate level classes, and conducting a study of the Kansas Regents Universities. The study focuses on faculty evaluations and their impact on faculty recognition and rewards.

Guzzetta considers himself to be a resource to the university's students and alumni and welcomes questions or concerns. He always is available for consultation and advisement with students or alumni. Anyone wishing to contact him may do so by calling the Jones Institute for Educational Excellence at 316-341-5372.

JONES DISTINGUISHED LECTURER



Dr. Patricia Shehan Campbell, head of music education at the University of Washington, Seattle, Wash., and the spring 1995 Jones Distinguished Lecturer, introduced students and faculty at Emporia State University to the multicultural world of music during her lecture, "A Worldscape of Music and Its Transmission," on Feb. 27 in Visser Hall Atrium.

Shehan Campbell has been recognized for her work in multicultural and world music education. She has studied in Bulgaria, China, India, Japan, and Thailand. She also has studied music education among Southeast Asians in the United States.

— continued from page 2 —

to complete a public policy study, with recommendations, focusing on educational reform in the state of Kansas. The study was published in 1990 in "Kansas Policy Choices: 1990."

After 12 years as dean of The Teachers College at Emporia State University, Jack Skillett is ready to step down. "It has been an exciting and rewarding 12 years . . . thanks to a supportive president, an exemplary faculty, and a dedicated staff. I now have an opportunity to go on sabbatical to renew and reflect before making a decision as to what new goals I may want to pursue. Initially, I will return to the faculty on a part-time basis in the spring of 1996. At a later date, I may pursue other opportunities in public administration, the private sector, or I may decide to seek public office," said Skillett.

During his sabbatical, Skillett will study charter schools in California, Connecticut, Minnesota, and Michigan to observe how the new privatization of schools movement may affect education and what potential charter schools may have for Kansas. He also will work on part six of a school series on education reform in Kansas since 1854,

and will prepare for a graduate law class that he will be teaching in the spring of 1996.

"Dean Skillett has been an outstanding Dean of Education. He has provided excellent leadership for the college, increased admissions and exit standards, and elevated the college to national prominence," said President Glennen. "It has truly been a pleasure to work with Jack these past 11 years."

In addition to his work at ESU, Skillett provided direct service to more than 60 percent of the school districts in Kansas. He has been involved in more than 100 superintendent searches throughout the state of Kansas, and has served on a number of task forces at the state, regional and national level. Since 1989, Skillett has been a member and served on the board of directors of the Renaissance Group, a prestigious national organization of 18 higher education institutions with a major commitment to the reform of teacher education programs; served two terms on the board of the Teacher Education Council of State Colleges and Universities (TECSCU), and was a founding member of the USA/China Teacher Education Consortium Board, which was formed to improve education and teacher education in China and the United States, based on friendship and equality. As a member of the board, Skillett will be returning to China in June of 1995. He also has served on the Kansas State Board of Professional Standards and numerous committees at the state level.

Skillett received his bachelor's degree in 1961 from Washburn University and a master's degree in 1964 from Emporia State University. He received an Ed.D. degree in 1971 from Oklahoma State University.

Skillett's wife, JoAnn, is a faculty member at Kansas State University. She spent 31 years with the Shawnee Mission Public Schools as a teacher and principal. She earned her doctorate from the University of Kansas.

Skillett has three children: Jerry, Diane and Judy. Jerry is the senior vice-president for the western United States for the Central Parking Corp. He lives in Pasadena, Cal. Diane Dunn is C.E.O. of Dunn & Associates, an accounting firm in Wichita, Kan. Judy Patterson, an ESU graduate, is a teacher at Lyndon High School, Lyndon, Kan. Skillett also has five grandchildren.

WATSON, WERNER TO RETIRE

Two Teachers College faculty members, Dr. Dick Watson, professor of education, and Dr. Gene Werner, professor of educational administration, will retire after this spring semester.

Watson joined the Emporia State University faculty in 1987. Prior to that he was the founding Dean of the School of Education at Oral Roberts University in Oklahoma. He received his bachelor's degree from Wabash College in Indiana, and then received both his master's degree and Ed.D. from Indiana University.

During his professional career, Watson contributed to the writing of more than \$6 million in grants that have been funded, including Right to Read grants and the McREL (Mid-Continent Regional Educational Lab) grant.

Watson plans to continue his involvement in the educational field after retiring. In addition to many other activities, he plans to open an office of development for The Christian School of Emporia. The office will work on fund raising, accreditation, and student recruitment for the school. Watson will remain in the Emporia area after his retirement, close to his 11 grandchildren.

Dr. Gene Werner joined the Emporia State University faculty in 1970 as the chair of the Department of Educational Administration.

Werner, a former high school teacher and coach, earned his bachelor's degree from Washburn University. He went on to receive both his master's degree and Ed.D. from the University of Kansas.

During his tenure at ESU, Werner was awarded the Citation for Distinguished Professional Service from the National Association of Secondary School Principals in 1986. In 1989, he was the recipient of the Governor's Award for Distinguished Service to Kansas Secondary Education.

Werner plans to remain involved in the field of education after his retirement from ESU. Among other activities, he will continue his work, on a voluntary basis, with the North Central Association, working with the outcomes accreditation process. Werner plans to stay in the Emporia area and looks forward to spending more time with his 10 grandchildren.

ALUMNI ACTIVITIES

Gary Albright (B.S. '73) is vice president of Becker Tire & Treading Inc. He and his wife, Mary, have three boys and live in Great Bend, Kan.

Kristy Anderes (M.S. '94) is working at the Therapeutic Learning Center, Emporia, Kan. She married Eric W. Pauls, June 4, 1994.

Josephine Bates (B.S. '42) was elected as a member of the Globe Unified School Governing Board for a four-year term. She also is a member of the state legislative committee of AARP.

Tamara Biggerstaff (M.S. '90) was married Oct. 8, 1994. She is the cooperative education coordinator at ESU.

Sarah (Bowling) Reynolds (B.S. '91) received the Shining Star Award from the Geary Unified School District. The award is given to recognize outstanding employees in the district. Reynolds teaches science and health to seventh graders.

Kathryn Brooks (B.S.E. '73) received a master's degree in education from MidAmerica Nazarene, Olathe, Kan., in May 1994. She is an elementary teacher at Eugene Field Elementary School in Ottawa, Kan.

Gilbert Brown (M.S. '84) is the Director of Student Services in the School of Education for Indiana University Purdue University at Indianapolis. His article "Debunking the Myth: Stories of African American Students" appeared in "Phi Delta Kappa" in 1994.

Dr. Herbert Bruning (M.S. '48) is retired and lives in Overland Park, Kan.

Pearl Cate (M.S. '64) is retired after 41 years of teaching and lives in Arkansas.

Teresa (Coffey) Tonn (B.S. '81) is an independent insurance agent in Haven, Kan.

Ronna Conley (B.S.E. '72) is the coordinator of the cardiopulmonary rehabilitation department at Lewisville Medical Center, Dallas, Texas.

Glen Crawford (M.S. '66) is retired after teaching high school industrial arts for 36 years. His wife, Alta, died in Dec. of 1992. He has since remarried. He and his wife, June, live in Potwin, Kan.

Angela Davies (B.S.E. '89, M.S. '94) teaches academically at-risk students at Lebo Elementary School, Lebo, Kan. She received a master's degree in reading in 1994.

Laura Devinney (B.M.E. '94) is teaching K-8 vocal music at Oil Hill School in El Dorado, Kan.

Jill Dreyer (B.S. '91) is a psychology instructor for Benedictine College.

Arthur Droegemeier (B.S.E. '49) is commander of the VFW (#4903) in Tucson, Ariz. He also volunteers at the Palo Verde High School where he taught and was athletic director until he retired in 1987.

Debra (Fankhauser) Workman (B.S. '88) married Brian Workman on Oct. 15, 1994. She is a receptionist for Family Physicians in Kansas City, Mo. Her husband, Brian, works for KPL Gas Service.

Melissa Fiscus (B.S.E. '94) is a first-grade teacher in the Altoona-Midway school district. She currently is working on a master's degree in clinical psychology.

Andrea (Flanders) Bell (B.S. '89, M.S. '91) was married on July 9, 1994. She is a U.S. probation officer in Denver, Colo. Bell also volunteers as a speaker for the Colorado Organ Recovery System.

Ingrid (Frazier) Ricke (B.S.E. '91) married Bart Ricke, July 17, 1993. She is a teacher at

Williamsburg Elementary, Williamsburg, Kan. Ricke also is the high school girls track coach, and the assistant girls volleyball coach.

Shelley Garza (B.S.E. '93) teaches a second- and third-grade multiage classroom in Lawrence, Kan. She also is the chair of the district's Professional Council and is participating on the school's QPA Outcomes Team.

Velma Goodall (B.S.E. '60) taught school for 15 years in Anderson County, Kan. Her husband died in 1973. She lives at the Golden Height Living Center in Garnett, Kan.

Patricia Gross (B.S.E. '93) teaches second grade in Amarillo, Tex.

Dana Haury (B.S.E. '86) teaches second grade at Jefferson Elementary School in El Dorado, Kan. She married Larry Haury on March 26, 1994. She is working on her master's degree at ESU.

Lela Heacock (B.S.E. '66) retired after teaching in the Wichita Public Schools for 27 years. She is now enjoying the extra time to read.

Terri Henderson (B.S.E. '80, M.S. '84) is a nationally certified counselor. She is a vocational counselor at Wyandotte High School, Kansas City, Kan. She also is in private practice with Henderson & Associates in counseling and consulting.

Donna Hinrichs (B.S.E. '78) was hired by the Baldwin City Cooperative in Education to serve as a special education teacher at the Lakemey Center for Exceptional Children in Paola, Kan.

Joyce Hirata (B.S.E. '64, M.S.E. '65) is a counselor and student activities coordinator at Waikae Intermediate, Hilo, Hawaii. She serves on the board of directors for the National Association of Student Activity Advisors, and the Division of Student Activities for the National Association of Secondary School Principals.

Lori Hurst (B.S.E. '80) is an elementary counselor at Garfield & Robinson Schools in Augusta, Kan. She received her master's in elementary and secondary counseling from Wichita State University in 1987.

Mary Kain (B.S. '54, M.S. '64) retired after teaching in the Clark County Schools for 30 years. She lives in California.

Helen Kyner (B.S. '64, M.S. '69) is a learning disabilities teacher for USD 501 Topeka, Kan. She also is working on a master's degree in special education.

Michael Lindeman (B.M.E. '69, M.M. '73) is assistant professor of music at Central Methodist College, Fayette, Mo. He teaches voice, music education, strings and educational technology. He also is working on a doctorate in choral conducting and voice and UMKC.

Kristin Linhart Mack (B.S. '92) was married to James F. Mack, III, June 18, 1994. Mack is a kindergarten/first-grade teacher. She team teaches in a multi-age classroom at Comanche Elementary School, Shawnee Mission, Kan.

Nancy Mason (B.S.E. '67, M.S. '70), received her doctorate in education from Walden University in August 1993. She currently is employed as a guidance counselor by the Seminole County School Board. Mason also serves as technology facilitator and liaison for the School Advisory Council.

Nancy McEndree (B.S.E. '71) currently is teaching at Humboldt Elementary School, Humboldt, Kan. She also is the building chairperson for Q.P.A.

Richard Milton (B.A. '74, M.S. '76) is an intake clinician at Behavioral Health Access Services, Baptist Medical Center, Kansas City, Mo. His wife,

Jolene (B.S.E. '75, M.A., M.L.S. '80) is teaching French at Blue Valley High School, and assisting the director of Music Theatre for Young People.

Brenda Rahe (B.S.E. '83, M.S.E. '90) is teaching third grade at a Department of Defense School in Yokosuka, Japan.

Yolette (Rehmer) Miller (B.S.E. '82) was married April 9, 1994. She is a learning disabilities teacher at Macksville, Kan.

Barry Rosshem (B.S. '79) and his wife, Shala, live in Sarasota, Fla. He received his M.S.E. from Wichita State University, Wichita, Kan., in 1983. He is teaching gifted biology, biology, and zoology at Venice High School in Venice, Fla. Shala is working for Barnett Bank in Sarasota. They have two sons.

Marilyn Seck-Wilson (B.S. '72, M.S. '75) retired in 1994 after 42 years of teaching. She lives in Clay Center, Kan., and enjoys traveling.

Margaret Settle (B.S. '40) retired in 1981 after teaching kindergarten for 30 years. She is a volunteer to the hospital and rest homes in Kingman, Kan. She plays the piano and organ at the Methodist church. Her husband died a year ago.

Brenda Shawley (B.S.E. '92) is a substitute teacher for four area school districts. She also serves as junior varsity and assistant varsity coach for Perry-Lecompton's girls volleyball, basketball and softball teams.

Debora Sims (B.S.E. '77) teaches kindergarten at Dallas Baptist University Lab School. She was honored as a 1994-95 recipient of Who's Who Among Students in American Universities and Colleges. She is looking forward to receiving her Master's in Education degree (Early Childhood) from Dallas Baptist University.

Suzanna (Skwarlo) Darby (B.S.E. '70) is on sabbatical from her position as chair of the humanities division at Cowley County Community College, Arkansas City, Kan. She is working on a doctorate in education administration, specializing in community college leadership, at the University of Texas, Austin, Tex.

Susan Stanton (M.S. '70) teaches kindergarten at Irving Primary, Garnett, Kan.

Nanette (Stevens) Smith (B.S.E. '83, M.S. '84) has been a fifth-grade teacher for eight years at Shawnee Elementary School in Shawnee Mission, Kan. She married Doug Smith (B.S. '82) in 1985. They have a 3-year-old daughter, Emma.

Gregory Stover (B.S.E. '74) is teaching Environmental Service Management courses at Metro Vocational Technical College in Oklahoma City, Okla.

Leona Strand (L.C. '36) is retired and lives in Wichita, Kan.

Dr. Donna Stuber (M.S. '87) served as the 1994-95 Psi Beta national president. She has served as chair of the psychology department at North Central Missouri College since January 1991.

Priscilla Templin (B.S.E. '93) is a teacher at Colvin Elementary School in Wichita, Kan.

Ronald Turner (M.S. '94) is a counselor at Campus High School in Haysville, Kan.

Cheryl Wahl (B.S.E. '92) is the public education officer for the Lakeland, Florida, Fire Department.

Marilyn Webb (B.S.E. '72) is a special education teacher at Plains Elementary School, Plains, Kan.

FACULTY ACTIVITIES

Donna Allen (HPER) presented "Conflict Resolution in School" at the Kansas Association of Health, Physical Education, Recreation and Dance conference in Topeka, Kan. She also presented a paper at the American School Health Association conference in Houston, Tex. Allen authored a chapter in the book "Youth At Risk: Reaching for Success." Additionally, Allen has been appointed to the Koch Crime Commission, a state-wide violence prevention coalition and is a member of the Juvenile Gang Taskforce where she is working on implementation of training workers and gang members in conflict resolution and strategic planning for community interventions in schools and neighborhoods.

Robert Ault (PSY/SPEC) had a one-man show of watercolors hanging at the Unitarian Universalist Fellowship in Topeka, Kan., Feb. 6 through March 19. He also had his article "Questions from the Arts Therapy Teleconference Answered by Bob Ault" published in the Winter 1995 issue of the "Quality of Life Newsletter, Linking Life and the Arts."

David Bateman's (PSY/SPEC) chapter "Transitional Programming: Definitions, Models, and Practices" was published in the book "Advances in Special Education: Perspectives on the Regular Education Initiative and Transitional Programs," vol. 8, edited by John Schwenn (PSY/SPEC) et al. Bateman was named to "Who's Who Among America's Teachers, 1994."

Barbara Bleeker (TCHRED) presented "Intrusive Academic Advising" at the NACADA regional conference in Austin, Texas. She also presented "Using a Prompt Box to Foster Literacy" at a writing conference in Lawrence, Kan.

Marc Comstock (ATHLE) published his article "10 Ways to Sell Your Players on Defense" in the December 1994 issue of "Winning Hoops."

Harvey Foyle (TCHRED) presented "Homework and Cooperative Learning: A Field Experiment's Implications for Classroom Practice" at the American Association for Teaching and Curriculum in Dallas, Texas.

ALUMNI ACTIVITIES CONTINUED

Ann Wilks (B.S.E. '66) teaches the third grade at L.F. Smith Elementary School in Pasadena, Texas. She currently is doing post-graduate work at the University of Houston and is a member of the scholastic honor society Kappa Delta Pi.

Edna Williams (B.S. '70, M.L.S. '81) is the Young People's Librarian at Dorothy Bramlage Public Library in Junction City, Kan.

David Zlab (B.S.E. '72) is the principal at Ness City High School, Ness City, Kan.

Gubernatorial Appointees

In January, Governor Bill Graves appointed Thelma Hunter Gordon (Ed.S. '75) as secretary of aging.

Lieutenant Governor Sheila Frahm retained the services of ESU alum William B. McGlasson (BSE '64) as acting director of the division of personnel services.

Dave Harris (ATHLE) sponsored a clinic for high school track and field coaches from around the state. ESU staff presented at the clinic, as well as staff from Johnson County Community College, Central Missouri State University, and the University of Kansas.

Linda Hazel (JIEE) displayed information about current projects of the Jones Institute for Educational Excellence, including National Board of Professional Teaching Standards, at the United School Administrator's Conference in Wichita, Kan. Hazel also presented an in-service to teachers in the Jenks, Okla., Public Schools. The in-service gave teachers general information about the NBPTS, and current field-test activities in Kansas and the nation. Hazel presented another NBPTS in-service to the Kansas Staff Development Council in Salina, Kan.

Jerry Long (TCHRED) presented "Restructuring Teacher Education for the Inclusion Classroom" and "Research and Analysis of Professional Development School Graduates and Traditional Teacher Education Students" at the Mid-America Regional ATE Conference in Omaha, Neb.

Lawrence Lyman (TCHRED) presented a workshop on the subject of and the teaching about "Chemical Warfare" at the National Social Science Association meeting in New Orleans, La.

Carol Marshall (ERLYCH) organized a state-wide public hearing on Infancy/Childhood Licensure in Kansas. The hearing was held at the National Teachers Hall of Fame, Emporia, Kan. She is co-chair of the committee to redesign Kansas Licensure for Infancy/Childhood. Marshall also serves on the Governor's Commission on Education for Parenting as the KCCTD representative.

Joella Mehrhof (HPER) and **Kathy Ermier** (HPER) will direct the third annual TAKE AIM! Summer Physical Education Conference held at ESU. TAKE AIM! is an activity based conference for practicing physical educators. Mehrhof's and Deanna Hawes' (COUNRE) article "Confidential Issues" will appear in the Summer 1995 issue of "The Physical Educator."

Tes Mehrling (ASSIST.DEAN) received the Council for Learning Disabilities (CLD) Professional of the Year Award.

George Milton (ATHLE) presented a session on advising student athletes at the National Academic Advising Association Conference in Las Vegas.

Jean Morrow (TCHRED) co-authored "Real People: A Fifth Grade Class Investigates the Lives of Mathematicians" which was published in "Teaching Mathematics in the Middle School." She also is on the steering committee for a summer academy for K-12 teachers to be held at six sites throughout the state of Kansas. The academy will discuss integrating mathematics and science and is co-sponsored by KATM and KATS. Morrow serves as president of the KATM.

Festus Obiakor (PSY/SPEC) presented "25 Years Later: Where are We in Educating African-American Exceptional Learners?" as a member of the CEC's Black Caucus of Special Education at the CEC's International Convention in Indianapolis, Ind. Obiakor also served as an editor for the book, "Effective Education of African-American Exceptional Learners: New Perspectives." Additionally, he co-authored "What's Next for African-American Exceptional Learners" published in the February 1995 issue of "CEC Today."

Leo Pauls (JIEE) is chairing a national committee for the Teacher Education Council of State Colleges and Universities (TECSCU) on how universities,

schools, colleges, and departments of education should respond to the work of the National Board for Professional Teaching Standards (NBPTS). He also attended a conference in Dallas on "Improving Teacher Education Through Standards-Based Assessment." The conference was sponsored by the American Association of Colleges for Teacher Education (AACTE). Pauls was invited by AACTE to participate as an observer and evaluator of the conference.

John Schwenn (PSY/SPEC) served as editor for the book "Advances in Special Education: Perspectives on the Regular Education Initiative and Transitional Programs," vol. 8. Schwenn authored the chapter "Serving Culturally and Linguistically Diverse Exceptional Students in the REI" which was included in the book. He also presented "Inclusion for All Teachers" at the Learning Disability Association of Mississippi annual conference in Jackson, Miss.

Kirsten Skarstad (TCHRED) presented "Teaching and Assessing Collaborative Skills in Cooperative Learning" at the annual symposium for the Kansas Association of Middle Level Educators (KAMLE) in Wichita. She also presented "Don't Just Test... Assess" at the Mid-American Regional ATE conference in Omaha, Neb.

Nancy Smith (TCHRED) co-authored "Demonstrating Strategy Application and Goals from a Learner's Perspective: Examining Preservice Teacher's Talk During Literature Discussions" which was published in the Winter 1994 issue of "Innovative Higher Education." She also presented the paper "Incorporating Graphing and Data Collection Activities in Grades K-4" at a meeting of the Missouri Council of Teachers of Mathematics in Columbia, Mo.

Mark Stanbrough (HPER) presented a computer program he developed called "Physical Fitness Testing" at the National Health, Physical Education, Recreation and Dance convention in Portland, Ore. He also was included in "Who's Who in Kansas Track and Field of 1994."

Lloyd Stone (COUNRE) co-authored the book "Foundations of Elementary and Middle School Counseling." Stone serves as chair for the KSBE Redesign Committee on School Counselor Licensure, chair for the Kansas Mental Health Counselors Licensure Committee, and president of the Kansas Association of Adult Development and Aging.

Anita Walters (HPER) published "Goal-Setting: Steps to Success" in the fall 1994 issue of "KAHPERD." She also co-presented "Bag Full of Boogie and Bop" with Joella Mehrhof (HPER) at the KAHPERD convention in Topeka, Kan. Walters presently is serving as the chair of KAGWS.

Ken Weaver (PSY/SPEC) et al. had their article "Defining Information Professionals: Assertiveness, Empathy, and Anticipatory Socialization Among Library, Business, and Counseling Graduate Students" published in "Libres: Library and Information Science Electronic Journal," vol. 4, 1994. He also presented the paper "Mood Assessment and Gender" at the Southwestern Psychological Association in San Antonio, Texas. Weaver serves on the executive council of the Southwestern Psychological Association. Weaver also was awarded Honorary Life Membership in the Great Plains Honors Council at the National Collegiate Honors Council convention in San Antonio.

HELP US STAY IN TOUCH

Let The Teachers College and your ESU friends know where you are and what you're doing! Please return this questionnaire to The Teachers College Newsletter, c/o Jones Institute for Educational Excellence, Campus Box 4036, Emporia State University, Emporia, KS 66801-5087.

The Teachers College Newsletter is published twice a year by the Jones Institute for Educational Excellence.

Advisory Board
Dean's Academic
Leadership Council

Kimera Maxwell, CEO
Emporia State University
Foundation

Leslie Eikleberry
Assistant Director,
University Relations

Editors
Sloan Powell
Beth Saiki-Olsen
Jones Institute for
Educational Excellence

Assistant Editor
Valerie Miller

Layout and Design
John Decker
ESU Printing Services

Photography
James R. Garvey
University Photography

Printing
Carl Hoffmans
Director, ESU Printing
Services

TEACHERS COLLEGE FUND FOR EXCELLENCE

TTC Fund for Excellence is intended for scholarships, enrichment activities, and other critical needs. If you would like to make a tax-deductible contribution, please make your check payable to The Teachers College Fund for Excellence and mail to:

The Teachers College
Fund for Excellence
ESU Foundation--1500 Highland
Emporia, KS 66801-5018
(316) 341-5367

\$ _____

- ☐ My employer will match my gift.
Enclosed is a matching gift form.
- ☐ I would like information regarding
planned giving.
- ☐ I would like information on establishing
an endowed fund.

Donor Recognition Clubs

Annual gifts to ESU in the following
amounts qualify donors for special
recognition.

\$1,000 & abovePresident's Club
\$500KSTC Club
\$250Black and Gold Club
\$100Anniversary Club
Up to \$100Century Club

Social Security Number

Class
Year

Phone

Division

New Address

Degree

Promotions, Job Changes, Awards, Activities, Name Changes, etc.

Please return entire page.

The Teachers College
Campus Box 4036
Emporia State University
Emporia, KS 66801-5087

Nonprofit Org.
U.S. Postage
PAID
Emporia, Kansas
66801-5087
Permit No. 203