

## EMPORIA STATE UNIVERSITY

*TEACHERS COLLEGE STUDENTS READY FOR THE 21ST CENTURY*

**T**he Teachers College not only prepares students for the 21st century, it also gives them the opportunity to experience it, with numerous opportunities working with computers and technology during their course of study at Emporia State University. In addition to having access to the latest technology, Teachers College students gain the knowledge of how to use technology and the skills needed to be able to integrate it into their chosen profession.

Technology changes how we teach, learn and communicate. One example of how technology is changing education is by shifting the focus from how people teach to how people learn, according to Marc Childress, assistant professor of Teacher Education. The Teachers College is preparing its students to be ready for the many changes and challenges they will face after graduation.

The Teachers College faculty are embracing the new technology available to them. Mark Stanbrough, the 1996 recipient of the Faculty Recognition Award for Instruction, is one example. Stanbrough, assistant professor of Health, Physical Education

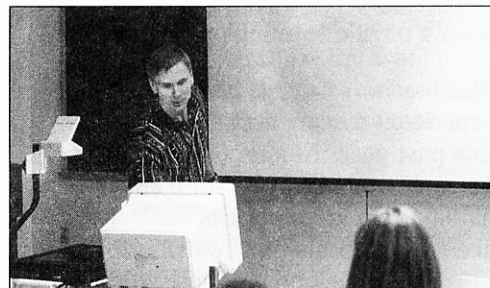
and Recreation, teaches Lifetime Fitness, Technology in Health, Physical Education and Recreation, and Exercise Physiology. He has integrated the use of technology in all of these classes. Three of five finals Stanbrough gave this spring were offered over the Internet, for example. The study guide for Lifetime Fitness is offered on the computer so that students can quiz themselves and immediately know which questions they missed and which areas they need to concentrate on during their studying for the exam.

Not only does Stanbrough use technology, his assignments require his students to use technology. One of Stanbrough's class assignments for Technology in Health, Physical Education and Recreation was to create a class presentation using PowerPoint software. Stanbrough was impressed with the results. "The students were very excited about these projects and they did an excellent job. Not only was the information included in the projects good, it was presented in an enthusiastic, interesting manner."

Teachers College students are ready for the 21st century thanks to the preparation they receive.

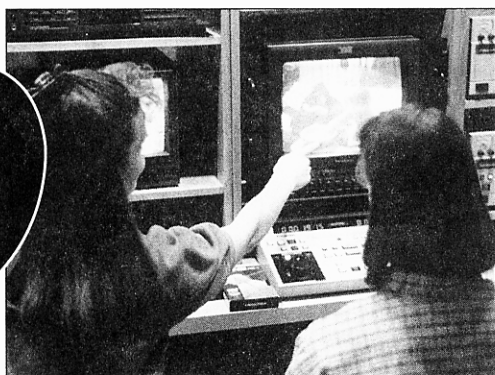
Carrie Haag and Hanni Stover, sophomores majoring in Elementary Education, edit a videotape in the Visser Hall Media Lab for an early childhood class presentation.

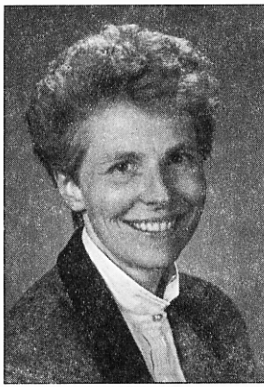
Students use technology for many class projects and presentations. Assignments include creating World Wide Web pages, making class presentations using PowerPoint software, and researching topics



Mark Stanbrough, assistant professor for Health, Physical Education and Recreation, uses the computer to advance to the next frame of his lecture for his Lifetime Fitness class.

on the Internet. Another assignment students in Instructional Media (CI371) have is to make their own multimedia projects using HyperStudio. In the project they must incorporate instructional design elements into an instructional multimedia lesson that includes digital sounds, movies, images, clip art, laser videodisc, CD-ROM, and audio CD. Many of the information, sounds, and images are found on the World Wide Web. When students are finished with the project, they have a product of their knowledge of computers and technology that they can demonstrate to future employers. Discovering the wealth of information available on the Internet, learning how to access it and how to judge its reliability for themselves are skills students will use throughout their careers.





## DEAN'S COMMENTS

### *Where We've Been-Where Are We Going*

I can hardly believe that my first year as dean of The Teachers College is nearing completion! I have found the role of

dean analogous to a perpetual ride on the Zambezi Zinger at Worlds of Fun! There usually is anticipation of upcoming events, daily opportunities for excitement and challenge, a good deal of fun, and relief when the ride is over (before you begin again!). It has been a terrific learning opportunity!

The Teachers College has experienced many accomplishments this past year. Numerous faculty have been recognized at the state and national levels for professional accomplishments and contributions. Undergraduate and graduate students continue to be recognized for their involvement in scholarly research activities including presentations and publications. The Teachers College has hosted several state conferences for professional organizations, including the Kansas School Counseling Conference, the Kansas Association of Elementary School Principals, the first (and we hope annual) Kansas Teachers of Psychology Conference, and the Take Aim Conference for physical educators, to name only a few. Technology had a major impact on the college – several courses were taught to multiple sites using two-way interactive instructional television, and all faculty were connected to the ESU token ring, allowing access to the World Wide Web and the Internet. A three-year long range plan was developed by faculty and staff and focuses on five key areas: Collaboration, Faculty Evaluation/Promotion and Tenure, Multicultural Curricula and Recruitment of Diverse Students and Faculty, Technology, and increased Resources. The year has not been without a touch of sadness. Dr. Ron Karst, a valued faculty member in the Division of Counselor Education and

Rehabilitation Programs passed away quite unexpectedly earlier this spring.

Several new developments are on the horizon for the 1996-97 academic year. Next fall, we will have a new Division of Instructional Design and Technology. The Division of Teacher Education has been reorganized and combined with Educational Administration and Early Childhood, resulting in two new division names: The Division of Early Childhood/Elementary Teacher Education, and the Division of School Leadership/Middle and Secondary Teacher Education. The M.S. degree in educational administration will not only have a new look, but it can be completed within an 18-month period of study. New Professional Development Schools will be opened in Emporia and Olathe. A 2+1+1 program of study is being developed for elementary education majors in conjunction with Kansas City Kansas Community College (KCKCC). This program will allow students to complete two years of study at KCKCC, one year of study on the ESU campus, and their senior year in a Professional Development School. Finally, the Jones Institute for Educational Excellence will house a recently approved Great Plains Center for National Teacher Certification. The Center will assist interested P-12 teachers in their pursuit of national board certification.

The Teachers College continues a tradition of excellence! Our students, faculty, and programs continually excel. We are blessed with interested and supportive alums! As this year comes to a close, we bask warmly in our accomplishments. We gladly anticipate the opportunities awaiting us in the coming year.

Tes Mehring, Dean  
The Teachers College

## News From Other Divisions

### • Counselor Education and Rehabilitation Programs

- Lloyd Stone is entering phase retirement this fall after 31 years of service to The Teachers College.
- Curricular changes for the School Counseling, Mental Health Counseling, and Student Personnel Services programs will be implemented in Spring 1997.
- In addition to interviewing for a director of the Counseling Practicum Clinic, the division currently is investigating a location for it.

### • Early Childhood

- Eileen Hogan, chair of the division, was awarded a \$12,000 grant from the Kansas Department of Social and Rehabilitation Services for Quality Enhancement of the Child Development Center. The grant is for upgrading teaching materials and the outside learning environment.

### • Educational Administration

- The division has selected Dr. John Laurie, principal of Hillcrest High School in Springfield, MO, to fill the vacancy created by Dr. Gene Werner's retirement.

### • Health, Physical Education and Recreation

- A new computer lab has been added to the Physical Education Building along with the renovation of the Rainer Martens' Library also located in the building.

### • Psychology and Special Education

- The division is in the midst of a comprehensive curriculum review that eventually will include every one of their degree offerings. By the end of the 1997-98 academic year, these crucial deliberations will be completed and the division's programs will continue to foster the quality, excellence, and leadership that currently characterize its programs.

### • Teacher Education

- Continuing its commitment to practicing educators, the division will offer off-campus courses in selected school districts this summer, as well as on-campus summer school courses.
- Courses will be offered in El Dorado, Burlington, over the Internet and Telenet on a variety of topics
- Teaching classes in off-campus sites is one way the division goes the "extra mile" to meet teacher needs.

## RESOURCE CENTER PROVIDES VALUABLE SERVICES

If Emporia State University students need help preparing a lesson on "Kansas Day" for their methods class, they need look no further than The Teachers College Resource Center located on the second floor of Visser Hall.

Established in the summer of 1979, the Resource Center was developed as "a model of inter-institutional cooperation." The center was designed to combine the resource collections of The Teachers College and the special needs collections of the Flint Hills Instructional Materials Center (FHIMC), a division of the Flint Hills Special Education Cooperative that includes seven school districts from the surrounding area.

The Resource Center, which is funded jointly by the university and the Flint Hills Special Education Cooperative, provides area educators with a wealth of materials and services.

Aaron Kealey, a senior in Elementary Education, and Tommy Stephens, a third-grader at Butcher Children's School, work together at the Resource Center.

"The resources of the center are available to any personnel within the seven districts, or any university faculty, students or staff," said Pam Swafford, director of the Resource Center, and recipient of the 1996 Darrell E. Wood Award for Service to The Teachers College. "The purpose of the center is basically twofold. We have tried to create an environment where prospective teachers may have access to teaching materials that they may find in classrooms anywhere in the state. We want them to learn how to find and use those support materials. The second purpose is to provide support materials for special needs learners in regular and special education classrooms."

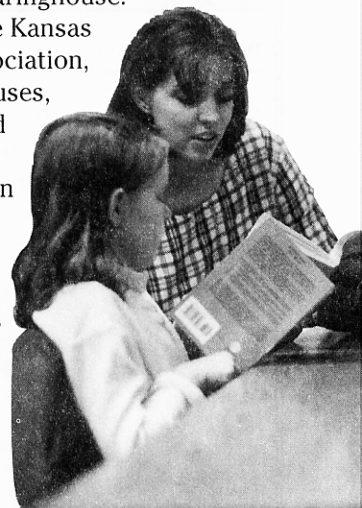
The center's inventory includes videos, children's books, multi-media packages, curriculum sets, master's theses from the Division of Teacher Education at ESU, a variety of other print and non-print items, and computer software. The center also provides lamination services.

During 1995, ESU students checked out more than 10,800 items, ESU faculty and staff used more than 870 items, and school district personnel reserved more than 7,200 items for their use. Students may check out items for up to two weeks. Faculty, staff,

and district personnel may reserve items for up to one month.

The Resource Center also houses two special collections. The center serves as the state's law-related education clearinghouse.

Funded by the Kansas State Bar Association, the center houses, maintains, and circulates a large collection of law-related education materials. The materials, which are available to any teacher or law professional, may be requested from the center by phone or in writing.



Deyna Johnston, a senior in Elementary Education, and Amanda Pitchford, a third-grader at Butcher Children's School, read together at the Resource Center.

In 1994, the center received a \$51,561 grant from the Governor's Commission on Autism to establish and house the Kansas Resource Center on Autism (KRCA). The KRCA provides information through a clearinghouse on autism located within The Teachers College, and through summer institutes on autism held on the ESU campus.

## FACULTY ACTIVITIES

**Donna Allen** (HPER) published the teaching strategy "Native names" in the book "In the rough. A teaching strategies directory for cultural diversity in health education."

**Howard Carvajal** (PSY/SPEC) and Bart Holmes (PSY/SPEC) along with former ESU graduate student Matt Schrader published their article "Retest Reliability of the Weschler Adult Intelligence Scale-Revised for 18- to 19-year-olds" in "Psychological Reports."

**Steve Davis** (PSY/SPEC) with ESU graduates Mindi Higgins, Amy Sutton, and Matt Huss authored the article "Perception of Career, Family, and Sex in Relationship," which was published in volume 76 of "Psychological Reports."

**Steve Davis** (PSY/SPEC), with former ESU graduate students Matt Huss and Angie Becker published their article "Norman Triplett and the Dawning of Sport Psychology" in "The Sport Psychologist."

**Kathy Ermier** (HPER) and Joella Mehrhof (HPER) have completed the editing of the book "IDEAS III - Activities for Middle School Physical Education"

for AAHPERD Publishing.

**Harvey Foyle** (TCHRED) edited the book "Interactive Learning in the Higher Education Classroom: Cooperative, Collaborative, and Active Learning Strategies," published by the National Education Association.

**Nancy Knapp and Janice Hoshino** (PSY/SPEC) passed their Board Certification examinations administered by the American Art Therapy Association. They are now Board Certified Registerer Art Therapists, the highest professional level recognized by the field.

**Paul McNab** (PSY/SPEC) was the Kansas Federation Council for Exceptional Children's nominee for the J.E. Wallace Wallin Award. He has been awarded the Xi Phi Outstanding Faculty Award and the Award for Distinguished Teaching at ESU. Dr. McNab has prepared yearly reports on attrition of Kansas special education personnel for KSBE since 1988.

**Jean Morrow** (TCHRED) published "Implementing the NCTM Standards: Walkway to the Future." The

book focuses on K-4 classrooms and what they would be like if the NCTM curriculum and evaluation standards are implemented.

**Festus Obiakor** (PSY/SPEC) was the recipient of the 1996 Professional Excellence Award from the Black Caucus of Special Educators of the Council for Exceptional Children.

**Marc Stanbrough** (HPER) was elected as the Kansas Representative to the American College of Sports Medicine. He also is the chair-elect of the research section of the Kansas Association for Health, Physical Education and Recreation. Stanbrough published "Anxiety and Athletic Performance: A Test of Zone of Optimal Function Theory," in "International Journal of Sport Psychology."

**Ken Weaver** (PSY/SPEC) published his article "Teaching of Psychology: Opportunity and Vision" in "Psychology Teacher Network," a publication of the American Psychological Association's Education Directorate.



# ALUMNI ACTIVITIES

**Josephine Bates** (B.S.E. '42) is the president of the Globe, AZ, School Board and the Miami Literary Club. She is the president-elect of the Arizona Retired Teachers Association and vice-chair of the state legislative committee of the AARP.

**Naomi (Anderson) Bauer** retired in 1988 after teaching for 55 years as an Independent Piano Teacher. She and her husband, Chester "Chet," reside in Hudson, KS. They have two children, five grandchildren and one great-grandson. She attended Kansas State Teachers College of Emporia (now ESU) and received a teaching certificate in 1931.

**Chester E. Bauer** retired in 1974 after establishing the Hudson Oil Company and working 40 years as a petroleum products salesman. He attended Kansas State Teachers College of Emporia (now ESU) and received a teaching certificate in 1932.

**Derald Boline** (B.S.E. '58) retired in 1995 after teaching 36 years, four at Paradise High School and 32 at Shawnee Mission East High School.

**Brena Clark** (B.S.E. '93) has been teaching sixth-grade English as a Second Language, reading, math, and science at Kenneth Henderson Middle School in Garden City for the past two years. She also sponsors Career Club and Crime Stoppers.

**James Cochran** (B.S.E. '50, M.S. '61) retired in 1989 from the Adjutant Generals Department. He resides in Auburn, KS.

**Linda Cookson** (B.S.E. '67, M.S. '70) teaches Communication to middle school students in Americus (USD 251). She also is serving as secretary of the School Site Council, was elected to the Ad Board of Sunflower Uniserve - KNEA, and appeared in "Who's Who of American Education" in 1996.

**Esther Cromwell** (B.S. '71) is in her 25th year of teaching kindergarten at Lincoln School in Clay Center, KS.

**Martha (Cronn) DeSoignie** (B.S.E. '72) retired in 1991 after teaching elementary school in Kansas and Texas. She and her husband, Roland DeSoignie, reside in Humble, TX.

**Alexander Czencz** (B.S.E. '65) is a senior account manager with PPG Industries Inc. Architectural Finishes in Pittsburgh, PA.

**Alesia (Dodson) Spangler** (B.S.E. '93) enjoys teaching kindergarten in the morning and K-2 special education in the afternoons. She and her husband reside in Lincoln, NE.

**Kendra Dunlap** (B.S. '91) is a staff assistant for U.S. Representative Sam Brownback in his Washington, D.C. office.

**Elma Dysart** (B.S. '72, M.S. '77) retired in 1991 from Holton U.S.D. 336 and now resides in Paola, KS.

**Jo Fenley** (B.S.E. '81) works at Shamrock ISD in Shamrock, TX, where she has been employed for 11 years.

**Cleo Gardner** (B.S.E. '78) is an elementary principal at Martin East and Martin West Elementary Schools in Atchison Public Schools.

**Lori George** (B.S.E. '94) is the teacher for the new USD 348/Baker University Laboratory Pre-School in Baldwin City, KS. The program is new, and is developed specifically to provide an educational site for pre-service teachers to learn appropriate instructional practices, management techniques, and other skills necessary to work with young children.

**Velma Goodall** (B.S.E. '60) celebrated her 90th birthday in March and is living in Golden Heights Living Center Nursing Home in Garnett, KS.

**Valarie "Diane" Greenleaf** (B.S. '82) has a son, Kane Christopher, born May 18, 1995.

**Karen Gunkel** (B.S. '89) is a stay-at-home mother with two children, Ellie and Alex. Her husband, Jerry (B.S.B. '84) is a Client Support Representative of Sungard Trust Systems, Inc. in Charlotte, NC.

**Nancy Gunther** (B.S. '57) retired in November 1995 as principal of St. Anne's Catholic School in Tomball, TX, after teaching for 37 years.

**Leah Hefner** (B.S.E. '69) has had several musical compositions and arrangements published. She is living in Fredonia, KS.

**Melinda Kendall** (M.S. '95) is employed by Area Mental Health Center in Garden City, KS, as an RMLP Clinical Psychologist.

**Jeremy Kohomban** (B.S. '89) is director of family services at St. Christopher's-Jennie Clarkson, one of 68 private agencies providing foster-care in New York. St. Christopher's and Jeremy were featured in a front page article of the *New York Times* in November 1995 discussing the revolution occurring in the foster care system in New York City and New York State.

**Sherry Lynch** (M.S. '80) is chair of the American College Personnel Association's Commission VII (Counseling and Psychological Services). She also is the staff counselor in the University Counseling Center at Virginia Polytechnic Institute & State University.

**Miller Massey** (B.S.E. '71) is the director of Social Services "At Your Service" Home Health Agency. He also works in the community with service projects teaching parenting classes and education classes in a homeless shelter as a volunteer. He received a master's in social work from the University of Kansas in 1991.

**Nancy McEndree** (B.S.E. '71) is in her 24th year of teaching at Humboldt Elementary School in Humboldt, KS. She currently is teaching second grade. Nancy received her master's in elementary education from Pittsburg State University in 1987.

**Marla (McTaggart) McMillen** (B.S.E. '92) teaches four and five year olds in the Early Childhood Education Program in the Belton School District in Belton, MO. She and her husband, Steve, have a baby girl, Jacqueline Danielle, and reside in Overland Park.

**Tammy Mentzer** (B.S.E. '92) teaches a GED class through Allen County Community College. She gave birth to triplets Nov. 1, 1995.

**W. Ray Miller** (B.A. '64) teaches middle school woodshop in Delran, NJ.

**Dennis Neff** (B.S.E. '73, M.S. '77) has been honored as a Society of Petroleum Engineers Distinguished Lecturer. This award involves a year-long speaking tour in which 30 presentations are given in the U.S., Canada, the Middle East, and China.

**Nancy O'Banion** (M.S. '83) will celebrate 10 years as Director of the Wellness Connection Health Promotion and Fitness Center at Rogers State College (Claremore, OK) this August.

**Sherri (Peckman) Webb** (B.S.E. '87) received her master's in education in 1993 from Mid-America Nazarene College. After teaching a level II classroom of semi-independent learners, she is the Secondary Inclusion Facilitator for the Olathe School District.

**Casey Phillips** (M.S. '94) plans to move to St. Louis, MO, to counsel full-time at the Rader Institute in the Lutheran Medical Center.

**Brenda Rahe** (B.S.E. '83, M.S. '90) teaches third grade in Japan. She has been there for three years.

**Maxine Rogers** (B.S.E. '37) retired from teaching in Kansas City, KS, in 1977. She then traveled extensively while working with "The Entertainers," a senior group that performs in retirement centers and adult day cares. After retiring from "The Entertainers" in 1988, Maxine swims, walks, plays cards, and reads. She resides in Overland Park, KS.

**Julie (Ruggles) Dolley** (B.S.E. '87) is in her second year as elementary principal in Argonia. She married Rick Dolley in June 1995 and resides in Danville, KS.

**Donna (Schrock) Sprague** (B.S.E. '95) and **Eric Sprague** (B.S. '91) are the proud parents of triplets born Jan. 22, 1996.

**Heather Shepherd** (B.S.E. '90) teaches fifth grade in Olathe, KS, (USD 233). She and her husband, Neil, have a two-year-old son, Andrew.

**Neil Shepherd** (B.S.E. '91) teaches fourth grade in Osawatomie, KS (USD 367).

**Christine Smith** (B.S.E. '90) works at the Cleo Wallace Center, a psychiatric facility/school in Denver, CO. She also is taking classes for a master's in moderate needs special education. Christine teaches special education and behavior disorders at the middle school level as well.

**Dana Smith** (M.S. '84) is a counselor for grades K-12, an activities director, middle school volleyball coach, middle school assistant track coach, testing coordinator, and is completing a term as secondary vice president of KSCA.

**Rhonda (Smith) Crow** (B.S.E. '78) teaches fourth-grade language arts, reading and social studies in LaFeria, TX. She and her husband, Jimmy Crow, reside in Raymondville, TX.

**Deloris (Strickland) Pinkard** (B.S.E. '66, M.S. '84) was promoted to Vice President for Executive Services at Kansas City Kansas Community College.

**Dena Tullis** (B.S. '90) works at the Knox County Association for Retarded Citizens as a Qualified Mental Retardation Professional and resides in Vincennes, IN.

**Randy Vick** (M.S. '81) is an assistant professor in the M.A. Art Therapy Program at the School of the Art Institute of Chicago. He is on the board of directors of the American Art Therapy Association (AATA) and was the 1995 recipient of the AATA Distinguished Service Award.

**Shawna (Wanklyn) Fox** married **Kenny Fox** Oct. 28, 1995, and resides in Holt, MO.

**Jim Webster** (B.M.E. '67) works as a textbook salesman representing Bob Jones University in four states. He conducts curriculum workshops in schools and seminars at statewide conventions. He earned a master's degree in administration in 1978 at Bob Jones University in Greenville, SC.

**Marlene Webster** (B.S.E. '66) teaches second grade at Thrifhaven Baptist Academy in Memphis. She and her husband, Jim, have four children and three grandchildren.

**Melisa Westerman** (B.S.E. '84) is head of the science department at South Middle School in Liberal and serves on a district-wide steering committee for designing authentic assessment instruments.

**Melvin Westerman** (B.S.E. '82, M.S. '84) is the director of student services at Liberal Area Vocational Technical School. He also serves as secretary/treasurer of the Kansas Vocational Counselors Association.

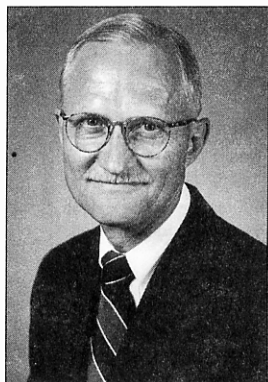
**Vera Williams** (B.S. '67) is retired and resides in Scott City KS.

**Brian Williams-Rice** (B.S. '88) completed a Ph.D. in counseling psychology from the University of Missouri-Kansas City in 1995. He currently is working as the Coordinator of Clinical Services at Fort Hays State University.

**Marilyn (Wilson) Seck** (M.S. '75) retired in 1994 after teaching 42 years. She resides in Clay Center, KS.

**Sarah Wiseman** (Ed.S. '73) is a literacy evaluator and tutor for McPherson Adult Reading Cooperative.

**Floyd Zahn** (B.S.E. '58) retired after teaching Driver's Education in Plainville, KS, for three years and Industrial Arts and Social Studies in Tumwater, WA, for 31 years. He also coached high school boys and girls soccer. He and his wife, Joanne, reside in Tumwater, WA.



## JONES INSTITUTE FOR EDUCATIONAL EXCELLENCE YEAR IN REVIEW

The staff members of the Jones Institute for Educational Excellence have been extremely

busy and productive during the current fiscal year. Numerous projects to support the improvement of education have been advanced by the staff. A new three-year strategic plan titled "A Plan for the Future" has been developed by the Jones Institute and will be presented to the administration of The Teachers College and the University. This plan calls for additional staffing and financial support to assist in guiding the activities of the Institute.

As Executive Director of the Institute, I want to highlight some of the Institute's projects of this current year.

- Plans are on-going with a National Board Introduction class, support activities for future teacher candidates, and other activities to support and enhance the work of the National Board for Professional Teaching Standards. These activities

will be directed through the recently established Great Plains Center for National Teacher Certification to be housed in the Jones Institute.

- The Institute is directing the second biennial Bank IV Kansas Better Schools Project, which was approved and refunded by Fourth Financial Corporation of Wichita.
- Each summer, the Institute hosts the Hubbard Summer Academy for Future Teachers which selects approximately 50 outstanding Kansas high school sophomores and juniors and provides the opportunity to learn about the teaching profession during an intensive one-week summer program.
- The Institute hosted a conference with the American Association of Colleges and Teacher Education in Kansas City Nov. 2-4, 1995.
- The Institute hosted a Reading Recovery Awareness Conference Nov. 27, 1995, to raise awareness in Kansas about Reading Recovery.
- In association with Pittsburg State University and the Southeast Kansas Education Service Center, ESU and

the Jones Institute have established a mentoring program and developed support materials for early career teachers.

- The 1995-96 Jones Distinguished University Lecturers were Dr. Doris Corbett, an associate professor of Sport Science at Howard University, and Dr. Charol Shakeshaft, a professor and chair of the Department of Administration and Policy Studies at Hofstra University.
- The 1995-96 Jones Distinguished University Professor is Dr. Arnold Moore, a former dean of the College of Education at Mississippi State University.
- The Director of Sponsored Research, whose position is jointly funded through The Teachers College and USD 253, currently is working on a variety of grant proposals for ESU and the Emporia School District.

Leo W. Pauls, Executive Director  
Jones Institute for Education Excellence

## STUDENT ACTIVITIES

**Jim Anderson, Michelle Hughes, and Doug Wolf (Teacher Education)** received the Darrell E. Wood award for excellence and promise in secondary education. Each semester students are chosen who represent the highest attainment in their class and who demonstrate the greatest potential for becoming outstanding teachers

**Martha Bleeker (Psychology)** was selected to attend the first American Psychological Association's Summer Science Institute. The institute brings together the top college freshmen and sophomores for one week of intense studying at the University of Maryland with the top psychological scientists in the nation. Only 60 students were selected from the nearly 350 who applied.

**Andrew Brown (Art/Education)** an undergraduate student, is doing collaborative research with Sheri Nowak, assistant professor of Psychology and Special Education, on Learning Disabled Gifted Students. They are surveying professors and teachers across Kansas and the nation.

**Janet Inman Zoller (Early Childhood)** was awarded the Laurence Boylan Graduate Scholarship. This is a \$2000 award for outstanding graduate achievement and scholarship.

**Kim Kalinowski (Health, Physical Education, and Recreation)** has been accepted to do an internship in New Zealand. Kim is completing her senior year requirements by doing a leisure studies and recreation internship in Hamilton, New Zealand. She will be doing some research at the University of Waikato. The majority of her experience will be with therapeutic riding and horsemanship, which is an area of study within the field of therapeutic recreation. Additionally, Kim will be doing a research study in the area of textiles and native culture weaving. Kim also is majoring in art.

**Rick Karmik and Nancy Whitmarsh (Art Therapy)** won the first ever Graduate Research Competition sponsored by the Kansas Psychological Foundation. Their paper, titled "The Comparison of the Cooperative Effects in a Group Following a Cooperative or Competitive Art Activity with Severely Emotionally Disturbed/Behavior Disordered

Children," was selected as the best paper in psychology submitted by graduate students (both master's and doctoral students) from all public and private colleges and universities in the state. They each received a plaque and shared the \$100 prize. Their paper will be published by the Kansas Psychological Association.

**Nicole (Siebert) Howard (Health, Physical Education, and Recreation)** will travel to the national physical education conference in Atlanta to receive a student achievement award.

**Nancy Whitmarsh's (Art Therapy)** master's project is the Studio Workshop Series. The two sessions feature Bruce Moon, co-director of the Graduate Clinical Art Therapy Program at Harding Hospital in Worthington, OH, and Debbie Simms, an art therapist specializing in Carl G. Jung's theory.

**Fifteen Health, Physical Education, and Recreation** students traveled to Eureka, KS, to participate in a junior/senior high school fair. They taught about stress management and self-defense.

HELP US STAY IN TOUCH

Let The Teachers College and your ESU friends know where you are and what you're doing! Please return this questionnaire to The Teachers College Newsletter, c/o Jones Institute for Educational Excellence, Campus Box 4036, Emporia State University, Emporia, KS 66801-5087.

|   |            |
|---|------------|
| Social Security Number  | Class Year |
| Phone   | Division   |
| New Address   | Degree     |
| Promotions, Job Changes, Awards, Activities, Name Changes, etc. |            |
| Please return entire page.                                      |            |

The Teachers College Newsletter is published by the Jones Institute for Educational Excellence.

TEACHERS COLLEGE FUND FOR EXCELLENCE

TTC Fund for Excellence is intended for scholarships, enrichment activities, and other critical needs. If you would like to make a tax-deductible contribution, please make your check payable to The Teachers College Fund for Excellence and mail to: The Teachers College Fund for Excellence ESU Foundation-1500 Highland Emporia, KS 66801-5018 (316) 341-5367

- \$ \_\_\_\_\_
- ☐ My employer will match my gift. Enclosed is a matching gift form.
  - ☐ I would like information regarding planned giving.
  - ☐ I would like information on establishing an endowed fund.

Donor Recognition Clubs

Annual gifts to ESU in the following amounts qualify donors for special recognition.

|                       |                     |
|-----------------------|---------------------|
| \$1,000 & above ..... | President's Club    |
| \$500.....            | KSTC Club           |
| \$250.....            | Black and Gold Club |
| \$100.....            | Anniversary Club    |
| Up to \$100 .....     | Century Club        |

The Teachers College  
c/o The Jones Institute for Educational Excellence  
Campus Box 4036  
Emporia State University  
Emporia, KS 66801-5087

Nonprofit Org.  
U.S. Postage  
PAID  
Emporia, Kansas  
66801-5087  
Permit No. 203