

EMPORIA STATE UNIVERSITY

JONES INSTITUTE RECEIVES NBPTS GRANT

Emporia State University's Teachers College through its Jones Institute for Educational Excellence has received a \$94,611, two year grant from the National Board for Professional Teaching Standards (NBPTS) to serve as a test site to help the board launch a national voluntary teacher certification system.

The project will be launched through a national Field Test Network (FTN) composed of 27 FTN sites, 110 school districts and over 3500 schools. The FTN will allow teachers to test assessments designed to measure what accomplished teachers should know and be able to do to receive National Board Certification.

During the two year contract period, the 27 contractors -- 15 individual school districts and 12 consortia -- will perform a variety of tasks, including reviewing and evaluating draft standards documents, creating professional development programs for teacher candidates, recruiting individuals for the field-testing activities, and generally working with NBPTS to communicate to teachers about National Board Certification.

According to Jack Skillett, dean of The Teachers College, "National certification will provide teachers with an advanced level of professional recognition through meeting high and rigorous standards which will complement the minimum standards currently attained for state certification."

Leo Pauls, executive director of the Jones Institute, will

serve as the site coordinator and Beth Saiki-Olsen, director of publications for the Jones Institute, will be the assistant coordinator.

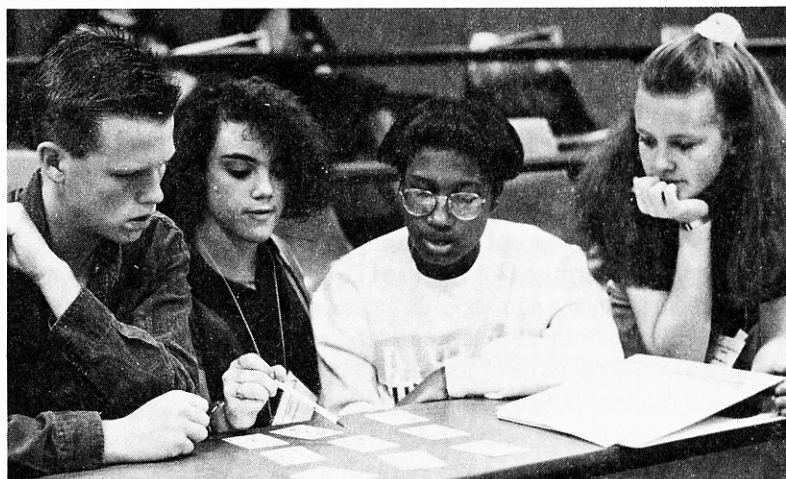
As an FTN site, the Jones Institute will be involved in field testing the behavior of selected teachers in the Flint Hills Educational Research and Development Association (FHERDA) consortium to determine the characteristics common to good teachers and to build a database for the national board. FHERDA is a consortium of 16 east central Kansas unified school districts, which sponsors activities of mutual benefit such as grant submissions, personnel training programs, and research studies. Thirteen of the FHERDA districts agreed to participate; they are: USD 243 Lebo-Waverly, USD 251 North Lyon County, USD 252 South Lyon County, USD 253 Emporia, USD 329 Mill Creek Valley, USD 330 Wabaunsee East, USD 386 Madison/Virgil, USD 390 Hamilton, USD 397 Centre, USD 417 Council Grove, USD 420 Osage City, USD 421 Lyndon, and USD 434 Santa Fe Trail.

A survey of teachers in the participating districts was conducted in November. The results will provide the Board with data regarding teachers' understanding and interest in national board certification. The results will be available in early 1993.

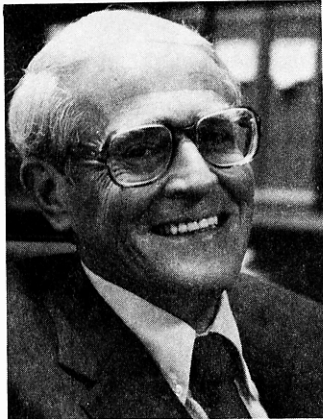
"We're trying to build a database of what makes a good teacher, to see who should be certified nationally," said Pauls.

The Jones Institute is the only FTN site in Kansas.

The fourth Summer Academy for Future Teachers was held May 31-June 5 with 52 of the state's brightest public and private high school students in attendance. Robin Williams (second from right) of Wichita South High School, works with her group on a cooperative problem solving activity assigned by Dr. Larry Lyman (EDADM). Under the direction of Dr. Tes Mehring (ASSIST. DEAN) and Dr. Scott Waters (TCHRED), the academy is underwritten by The Hubbard Foundation, located in Fort Worth, Tex.



WE ARE AMONG THE BEST



Historically, Emporia State University has been a leader in the area of teacher education. In keeping with the university's rich heritage and strong tradition of excellence in teacher education, The Teachers College has over the last decade moved into a position of national prominence. Its programs, faculty, and students continue to receive recognition throughout the nation for innovation, excellence, and leadership. Emporia State University is one of only sixteen universities in the nation to hold membership in the Renaissance Group, a group of universities committed to providing national leadership in the area of teacher education. In addition, the university's membership in Project 30 Alliance, along with President Robert E. Glennen's chairmanship of the AASCU Presidents' National Commission on Teacher Education, provide additional evidence of

national recognition.

Indeed, an enrollment increase in The Teachers College of over 33 percent since 1986; notification last month of full accreditation by its national accrediting body, NCATE; and the receipt of over \$200,000 in grants during the last six months, indicate that The Teachers College has significantly enhanced its role at the state and national levels.

But, The Teachers College is more than teacher education far more. The college's psychology programs, both undergraduate and graduate, have been recognized as among the top in the nation for their student-centered, research-focused curricula. The programs were recently rated among the top four in the nation for research in universities of similar size. The college's rehabilitation counseling program continues to be the only program not located in a major research institution to receive federal grants to support undergraduate and graduate programs. The college's recreation program in the Division of Health, Recreation and Physical Education is one of two in the state where students can receive a baccalaureate degree in recreation. The college's special education program has been recognized as one of the top eight programs in the Midwest. This program continues to attract students throughout the state and nation.

The college's counselor education program continues to lead the state in the number of counselor educators prepared. Over 41 percent of the practicing school counselors in the state have one or more degrees from Emporia State University. The college's art therapy program, the only such graduate program in the state,

recently received national accreditation. And, the college's educational administration program, which prepares the second largest number of building administrators in the state, continues to increase in size.

To say that we are excited about the future may be an understatement. We couldn't be more pleased with our progress. Yet, we are faced with significant challenges. The newspapers are replete with articles on the need to restructure K-12 schools and professional preparation programs. Although we have continued to restructure our programs, much remains to be done. The integration of technology into our curriculum needs to be fully realized, greater emphasis on outcome strategies will need to be employed, and curricular modifications must unfold that will allow our students to meet the needs of a diverse student population.

In closing, we are mindful of our heritage and tradition. In 1865, our first four graduates received their teaching credentials from the Kansas Normal School. It was believed that they were among the best. In 1993, over 500 graduates in various fields will receive degrees from The Teachers College. We believe they will be among the best not only in the state, but the nation. Our challenge is simple -- to be the best in the nation.

Warmest regards,

Jack D. Skillett, Dean
The Teachers College

TEAM ATTENDS TEACH AMERICA CONFERENCE

Emporia State University President Dr. Robert E. Glennen was one of 35 college and university presidents who led a team which participated in the national conference, "Teach America: Teacher Preparation for the New American School" in Washington, D.C. June 14 -16.

The conference, sponsored by the American Association of State Colleges and Universities (AASCU) and Digital Equipment Corporation, featured a number of distinguished speakers including President George Bush; Secretary of Education Lamar Alexander; "I Have a Dream Foundation" founder Eugene Lang; and columnist for *The Washington Post*, William Raspberry.

According to Glennen, who is chair of AASCU's Presidents' Commission on Teacher Education, "Teach America" was a

working conference. Participants worked to define the schools of the future, to specify the role of the teacher and to develop strategies for teacher preparation and retraining programs. Strategies and recommendations from the conference will be released in a position paper on the improvement of teacher education.

In addition to President Glennen, ESU's team included Dr. David Payne, vice president of academic affairs; Dr. Jack Skillett, dean of The Teachers College; Dr. Jim Wolfe, dean of the College of Liberal Arts and Sciences; Shirley Palmer, a teacher at Winfield Scott Elementary in Ft. Scott, Kans., and a member of the Kansas Board of Regents; and Larry DeBauge, president of Coca Cola Bottling of Emporia.

WESTERMAN NAMED JONES PROFESSOR

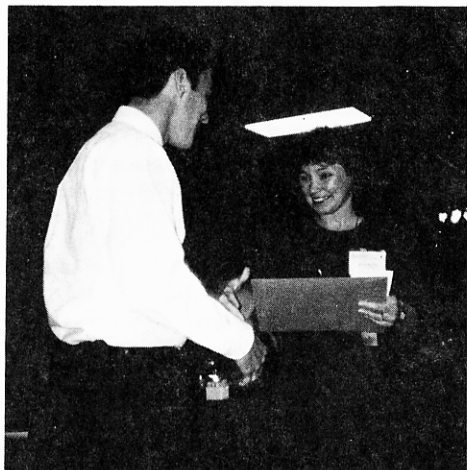
Dr. W. Scott Westerman, dean emeritus of the College of Education at Eastern Michigan University, was the Jones Distinguished Professor for the fall semester.



Westerman was dean of education at Eastern Michigan from 1980-1991 and was a professor and department chair in that university's College of Education from 1971-79. Prior to 1971, he was superintendent of the Ann Arbor (Mich.) Public Schools and a professor at the University of Michigan.

Active in the teacher education reform movement, Westerman was a member of the American Association of Colleges for Teacher Education, the Renaissance Group, the National Education Association and served on the Editorial Advisory Board of "Education Digest."

While at ESU, Westerman worked on several projects, including an in-depth study of Kansas high school seniors who were National Merit Semifinalists for the 1992-93 academic year; the development of a policy analysis style guide for the Jones Institute; as well as teaching one section of CI 120 Introduction to Teaching.



PAULS SERVES AS NEW EXECUTIVE DIRECTOR

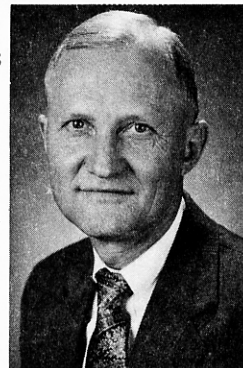
Effective July 1, 1992, I was selected as the Executive Director of the Jones Institute for Educational Excellence. Dr. Stu Ervay very ably served as Executive Director for eight years. Under his direction the Institute truly became an institute providing quality educational leadership for Kansas schools. The Institute is partially funded by the Walter S. and Evan C. Jones Trust of Lyon County, Kans. Additional funding and services are made available through sales, subscriptions, contracts, and the State of Kansas. The Institute, originally called the Center for Educational Research and Service, was established in August of 1982. For ten years, it has been an important partner in Kansas education, providing services and leadership so as to impact all areas of teaching, learning, and administrative leadership.

In addition to the Executive Director, the Institute staff includes an Administrative Assistant, a Director of Publications, the Jones Distinguished University Professor, and a Director of Sponsored Research, effective July 1, 1993. Activities and projects currently being conducted in the Institute include

policy analysis work in the areas of early childhood, Kansas National Merit Semi-Finalists, and the attrition rate of Kansas' special education teachers;

sponsoring Jones Distinguished University Lecturers; serving as the only field-test site in Kansas for the National Board for Professional Teaching Standards; marketing faculty publications; working closely with the Flint Hills Educational Research and Development Association; providing field services to Kansas schools; delivering methods of effective teaching to the Wolf Creek Nuclear Generating Station's management personnel; and sponsoring workshops for Kansas' school personnel.

For further information, suggestions, ideas, and brainstorming, please contact the Institute personnel. We are here to serve through quality educational leadership.



COLLEGE PARTICIPATES IN RENAISSANCE GROUP

President Robert E. Glennen led a group of Emporia State University representatives to the Renaissance Group Conference, Nov. 4-6 at Ball State University.

The Renaissance Group, formed in 1989, is a consortium of universities and colleges with a major commitment to teacher education. Renaissance Group members believe that the key elements to the success of teacher education programs include: a university-wide commitment to the preparation of teachers; outstanding faculty members in all disciplines devoted to the education of teachers; extensive relationships with schools and other

educational agencies; and teacher education programs that reflect the cultural diversity of America.

Presidents, academic vice presidents and deans of education from sixteen of the nation's premiere teacher education institutions attended a variety of sessions on effective clinical experiences, diversity, and multiculturalism in teacher education during the three-day event.

Dr. David E. Payne, vice president academic affairs, Dr. Jack D. Skillett, dean, The Teachers College, and visiting Jones Distinguished Professor, Dr. W. Scott Westerman accompanied Glennen to the conference.

Richard (Rick) Boyle, son of Mr. and Mrs. Joe Boyle of Topeka, received the Outstanding Physical Education Major in Kansas Award for ESU at the state convention of the Kansas Association of Health, Physical Education, Recreation and Dance in November from Dr. Joelle Mehrhof, chair of HPER. Boyle, a dual major in physical education and social studies, completed his student teaching experience in December and plans to pursue a teaching position. His future plans also include attending graduate school in counseling and guidance.

KAESP HONORS EXECUTIVE DIRECTOR



Dr. Bill Scofield, professor, division of education administration, was recognized for his 20 years of service as executive director of the Kansas Association of Elementary School

Principal's at KAESP's 45th annual fall workshop held Sept. 24-25, 1992 at ESU.

Scofield, who has organized the workshops and edited KAESP's newsletter for the past 20 years, reflected on the history of KAESP, "Back in the late 40s, and today as far as that goes, you had to know where you had been to know where you were going. In 1948, the first elementary principal certificate was issued in Topeka, Kansas. Prior to that, principals were also teachers. The principals decided that they needed an association and formed the Kansas Elementary Principal's Workshop. They then needed a place to meet and the Kansas State Teacher's College said that they could meet here; the workshop has been held here ever since. Cliff Huff was the first executive director of that association."

According to Scofield, schools have dramatically changed during the last twenty years, "Schools reflect their

communities and their style of living. Like everything else, we've got good, medium and lousy teachers-- the same goes for administrators. However, by and large one of the highlights over the years in education (for me) has been the wonderful people in the field, the personal relationships and the friendships," Scofield commented.

Although on phased retirement, Scofield plans to continue as executive director and has no plans for full retirement in the coming year.

"I see more changes in the next decade, because so many teachers and administrators will be retiring either legitimately or early retirements causing 50 percent change. Hopefully, the new ones coming in will take up where the older ones left off and will be able to go from there," concluded Scofield.

KUEHN RECEIVES GRANT

Dr. Marvin Kuehn, professor and director of rehabilitation programs for Emporia State University, received a three year, \$71,771 grant, from the Department of Education's Office of Special Education and Rehabilitation Services.

The purpose of the grant is to encourage students to enter the rehabilitation field at the undergraduate level. According to Kuehn, there are a number of careers in the rehabilitation field that do not require a masters degree, but that do allow graduates the opportunity to work with disabled populations in order to help them become more independent.

Funds from the grant will be used for direct financial assistance for students. Students in the program are eligible to receive funds for tuition, fees and a monthly stipend. A portion of the funding also will be used for clerical help, a graduate assistant, travel money for students to attend conferences, professional development, supervision, equipment and testing materials.

ESU's undergraduate rehabilitation program is the only such program in the four-state region and it is only one of six in the nation to receive federal funding.

EARLY CHILDHOOD CONFERENCE HELD

Approximately 1,500 early childhood care and education professionals attended the Kansas Association for Young Children's Annual Conference Saturday, October 10, on the campus of Emporia State University.

The conference, co-sponsored by The Teachers College, division of early childhood education and the Flint Hills Association for the Education of Young Children, was directed by Dr. Eileen Hogan, division of early childhood education and Becky Woerz, Tender Years Child Care Home. Dr. Brenda Hudson, division of early childhood education and Dr. Sandra Theis, formerly of The Teachers College, served as program chairpersons. Dr. Carol Marshall, division of early childhood, coordinated hospitality while Dr. Bill Stinson, division of health,

physical education and recreation, served as publicity chair.

The conference featured more than 107 presentations on a variety of topics concerning the care and education of young children. Among the topics covered were infant/toddler curriculum, family child care issues, appropriate assessment and observation techniques, developmentally appropriate curriculum for Pre-K to grade 3, cultural awareness issues, early childhood special education issues and health concerns.

Eleven ESU faculty members and three master degree students shared their expertise as presenters. Eleven other institutions of higher education also were represented as presenters. Approximately 40 undergraduate students also worked at the conference.



The Flint Hills Educational Research and Development Association (FHERDA) held its fall inservice conference on Monday, October 5, 1992 on the ESU campus. The focus of the conference this year was "Outcomes Based Education."

Dr. Zacharie J. Clements, a published author and recognized lecturer in the field of education, gave the keynote address, "Successful Schools: The Possible Dream." Over 700 teachers attended 60 sessions, many conducted by The Teachers College faculty.

WEAVER DIRECTS REGENTS ACADEMY



The 1992 Regents Honors Academy, under the direction of Kenneth Weaver, associate professor, division of psychology and special education, was held at Emporia State University, July 5-31.

The Regents Academy, a residential, academic, summer program, was established by the state legislature in 1986 in response to a study that cited a "brain drain" in Kansas. Too many of Kansas' best and brightest students were leaving the state rather than attending a Regents institution. The academy, in its sixth year, has met on each campus of the Regents system. Each academy features a theme

and showcases the best that each university has to offer.

"Understanding Freedom" was the theme for ESU's academy, which was attended by 131 students who had just completed their sophomore or junior years of high school. According to Weaver, the theme was chosen because a similar theme had been used successfully by the honors program at ESU.

"The theme introduced so many ideas and generated so many questions. How do you define freedom? How do laws define freedom? What is choice? Who can choose? Does the government decide what is freedom? What about censorship? Prejudice? Racism? Pornography? Some of the discussions were unsettling for the students, but it gave them a lot to think about," said Weaver. "The rules of the academy state that students are confined to the campus during the academy and they cannot leave for any reason or else they would be completely out of the program. The irony of their situation was not lost on the students during their discussions."

During the academy, students attended two college classes which had to be interdisciplinary in nature and totally unique to the university. The classes were

taught by eight ESU faculty members. Students also heard from a number of invited speakers, who included Professor Dan Wildcat of Haskell Indian Junior College in Lawrence, Kans.; Kansas Senate President Bud Burke; Director of Minority Studies at Wichita State University, Dr. John Gaston; and former director of the Kansas Department on Aging, Esther Wolf.

Students selected to participate in the academy underwent a rigorous selection process. They were first nominated by their high schools and later selected by a committee with statewide representation. Participants were chosen based on grade point average, standardized achievement test scores, school activities, work experience, an original essay and teacher recommendations. Selection reflects representation of the 40 Kansas senatorial districts.

McDonald's of Kansas has supported the academy since its inception with over \$100,000 in scholarships, services, and goods. McDonald's also provided \$15,000 to establish an endowed fund at ESU to provide a scholarship to a Kansas Regents Honors Academy student who chooses to attend ESU.

PROMOTIONS: PAULS, RUBENOW AND SCHWENN

Dr. Jack Skillett, dean of The Teachers College, announced the following promotions for the 1992-93 academic year.

Dr. Leo W Pauls, professor in the division of teacher education, was named the executive director of the Jones Institute for Educational Excellence. Pauls is the second director since the Institute was endowed in July, 1986 by the W.S. and E.C. Jones Trust of Lyon County, Kansas.

Pauls most recently served as associate chair of the division of teacher education, and also served as associate chair of the division and coordinator of reading at ESU.

Active nationally in the field of reading, Pauls has authored chapters in books on

reading and vocabulary, and has published journal articles and presented nationally and regionally on both subjects. He has been president of the Flint Hills Council of The International Reading Association, the Kansas Council of the International Reading Association, and Kansas Reading Professionals in Higher Education. Pauls recently served as chair of the International Reading Association's National Council for Accreditation of Teacher Education Advisory Group.

Dr. Robert C. Rubenow was named the new director of professional laboratory experiences. Rubenow has previously served as the executive director of the National Teachers Hall of Fame and as acting chair of the division of early childhood. He orchestrated the induction of the first "class" of teachers into the Hall

of Fame this year. Before joining the faculty at ESU, Rubenow was superintendent of a Chicago suburban high school district from 1983-1989.

Dr. John Otto Schwenn, professor in the division of psychology and special education, has been named chair of the division. Schwenn has served as associate chair of the division since 1989. Previously, Schwenn worked as director of the special education program, division of behavioral sciences, and coordinator of graduate programs, division of curriculum and instruction at Delta State University in Cleveland, Miss. Schwenn's numerous publications and presentations include research on helping students with learning disabilities and assessment of intelligence, conditions, and teacher presentation styles.

JONES DISTINGUISHED FALL LECTURER



Dr. Madeleine R. Grumet, nationally known author and lecturer, delivered the fall Jones Distinguished Lecture at Emporia State University on Oct. 16, 1992. Grumet is also the dean of the School of Education at Brooklyn College, City University of New York and the author of "Bitter Milk: Women in Teaching," published in 1988.

The Jones Distinguished Lecture Series brings nationally recognized educational leaders to the ESU campus twice a year to address large groups of educators and students, as well as to participate in small groups, open forums and classes.

Grumet's lecture, "Reading, Writing and Ritual" explored the problems today in teaching children to love to read and write "when our educational colleagues have had to leave love out" of the classroom. As Grumet stated, "We love to read and we also read in order to love." Yet in the classroom, Grumet pointed out, children are taught to adapt to certain rituals where they are forced to be "nice, physically and emotionally tight and controlled." Our educational rituals have allowed no room "to love" in the classrooms of today. Grumet also feels that, all too often, children have been left out or forgotten in the development of educational theories.

During her visit to ESU, Grumet attended an afternoon reception with College of Liberal Arts and Sciences and The Teachers College faculty, honors students and members of Sigma Tau Delta.

ALUMNI NEWS

Barbara (Browne) Bernard (M.S. '66) retired as associate professor of Health, Physical Education, Recreation, and Dance (HPERD) at Northwest Missouri State University after 26 years. She also was granted Emeritus Faculty status by NWMSU Board of Regents.

Lana (Taylor) Brown (B.S.E. '68, M.S. '69) is the principal at Calcium Primary School in the Indian River Central School District, Watertown, NY.

Andrew R. Carrier (M.S. '86) recently became athletic director at Ottawa University, Ottawa, KS.

Barbara Chamberlain (B.S.E. '75) is chair of the English Department at Highland Park High School, Topeka, KS.

Jerry Henn (B.S.E. '83; M.S. Ed.Ad., '90) has been appointed assistant principal and athletic director for Ellinwood High School, Ellinwood, KS.

Jack Heyne (M.S. '76) is a vocational rehabilitation counselor for the State of North Dakota in Bismarck, ND.

Dr. Donald W. Ingwerson (B.S. Ed., '54; M.S. Ed.Ad., '57) was named "National Superintendent of the Year" by the American Association of School Administrators. Ingwerson has been superintendent of the Jefferson County Public Schools, Louisville, KY since 1981.

Shirley McGilbray (B.S.E. '65) is a teacher at Buckner Elementary School, Wichita, KS.

She received a Golden Apple Award for teaching.

Richard McClure (B.S.E. '86) is the head strength and conditioning coordinator at Northern Arizona University, Flagstaff, AZ.

David Neufeldt (B.A. '76, M.S. '79), a psychology instructor at Hutchinson Community College, has been elected the Kansas representative to the Southwestern Psychological Association Executive Council.

Lorri (Snyder) Perkins (B.S.E. '84) is a counselor at East Nicolaus High School, Lincoln, CA.

Deloris (Strickland) Pinkard (B.S. '66, M.S. '84) has been appointed principal at Indian Creek Elementary School, Kansas City, KS.

Andy Tompkins (M.S. '73) was selected as the 1991-92 "Kansas Superintendent of the Year" by the Kansas Association of School Administrators. Tompkins has been superintendent of the Salina USD 305 public schools since 1987.

Edna Carol (Smith) Wichman (B.S. Ed. Elem., '67; M.S. Ed. Tch. '71) was named 1992 Woman of the Year by the Fairborn (Ohio) Branch of the American Association of University Women. Wichman is the media specialist for Fairborn High School.

Marybeth (Burwinkle) Whipple (B.S.E. '91) is a second grade teacher at Walnut Grove Elementary School in Olathe, KS.

NEW FACULTY APPOINTMENTS

Dr. David Bateman, assistant professor in the division of psychology and special education, was previously a research assistant for the Beach Center on Families and Disability at the Schiefelbusch Institute for Life Span Studies at the University of Kansas. Bateman also served as the project director for the Community Partners Project, Full Citizenship, Inc. in Lawrence. He has also co-authored federally-funded grants on innovative programs for youths with severe disabilities and enhancing natural support in community employment for youth with disabilities.

Dr. Cynthia S. Cashman, instructor in the division of teacher education, has been a graduate teaching assistant since 1988 in the department of educational technology at the University of Oklahoma. She has published and presented nationally on the subjects of enhancing integration of computers through productivity applications, and providing inservice computer training for teachers during the school day.

Joan Rene Easton, director of the health promotion and wellness center, joined ESU in 1990 as an instructor of Fitness and Wellness courses and also taught Foundations of Soccer. She has also served as an advisor for graduate students and on the Dean's Student Advisory Committee.

Dr. Judith McConnell Falk is associate professor and chair of the division of early childhood. She previously was assistant professor in the department of curriculum and instruction in the School of Education at William Paterson State College of New Jersey. At WPSC McConnell Falk taught both graduate and undergraduate courses, and served as the Coordinator of the Pre-K Practicum Early Childhood program. Her research activities include gender and multicultural issues of children.

Dr. Jerry Carl Long is associate professor and chair of the division of teacher education. Long previously served as an associate

professor and director of field experience at the University of Montana's School of Education. Long's recent publication and workshop topics include cooperative school/university relations and censorship and the schools.

Dr. Michael R. Murphy is assistant professor in the division of psychology and special education. Previously, he served as a psychological intern, conducting job and data analysis for Maxwell House Coffee and Kraft/General Foods, and as a feedback leader/training developer for the interviewing institute, personnel psychology services center, at the University of Houston. His research interests include social cognitive processes in organizational environments, performance appraisal, and group dynamics.

Dr. Lisa M. Reboy, assistant professor in the division of psychology and special education instructor, was a continuing education instructor at the University of Kansas before joining the faculty at ESU. Reboy also served as a writer for a vocational literacy series for McGraw-Hill, and is preparing to publish a study guide on human development for Prentice-Hall.

Beth Anne Saiki-Olsen is supervising student teachers on a half-time basis for the office of professional education services, is assistant coordinator of the National Board of Professional Teaching Standards Field Test Network Site, and is director of publications in the Jones Institute. She has been an English and Journalism teacher at Highland Park High School, Topeka, since 1988.

Anita Marie Dreiling Walters is a lecturer in the division of health, physical education, and recreation. A recent graduate from ESU's physical education master's program, Dreiling Walters is teaching health education classes and will work with physical education majors next spring.

FACULTY ACTIVITIES

Robert Ault (PSY/SPC) participated on the opening panel "Artist, Teacher, Clinician, Healer: Advancing the Dialogue" of the 23rd Annual Conference of the American Art Therapy Association in Las Vegas.

Betty A. Campbell (TCHRED) presented an inservice on secondary content reading areas for USD 386 Madison-Virgil on Oct. 22 and Nov. 10. She also presented the paper "Using and Writing Dialogues from Children's Literature" at the Great Plains International Reading Association (IRA) Oct 29-31 in Kansas City.

Howard Carvajal (PSY/SPC) co-authored "Comparisons of the IQ and vocabulary scores on Wechsler Preschool and Primary Scale of Intelligence-Revised and Peabody Picture Vocabulary Test-Revised" which was published in *Psychology in the Schools*, vol. 29. He also co-authored "The effect of Grade Level on WISC-R IQs of 6-year olds" which was published in the *Bulletin of the Psychonomic Society*.

The National Education Association's Early Childhood Education series, released the text, "Cooperative Learning in the Early Childhood Classroom" by Harvey C. Foyle (TCHRED), Sandra C. Thies (formerly of ERLYCH) and Larry R. Lyman (EDADM).

Mark B. Goor (PSY/SPC) is president of the Missouri and Kansas Council for Learning Disabilities for 1992-93. He is also the president-elect of the Kansas Division of Learning Disabilities, and has been elected vice-president of the Kansas Federation of the Council for Exceptional Children.

Deanna J. Hawes (COUN/RE) presented the paper "The School as a Training Site: Issues in Supervision" at the Association for Counselor Education and Supervision's National Conference in San Antonio, Texas, in Sept. She also serves as the editor of the North Central Association of Counselor Education and Supervision's newsletter.

Eileen L. Hogan (ERLYCH) received a \$55,666.00 grant from SRS of Kansas to expand the current child care services provided at the Child Development Center at Emporia State University.

Sharon K. Karr (PSY/SPE) received a \$15,000 grant from the Kansas Department of Corrections to provide mental health services for parolees.

Basil Kessler (COUNRE) serves as vice-chair of the Board of Directors for the Kansas Commission for the Deaf and Hearing Impaired. He also presented "Advising the

Involuntarily Undeclared" at the National Academic Advising Association Conference in Atlanta, Oct. 11-14.

Nancy Knapp (PSY/SPC) authored four chapters in the textbook "A Guide To Conducting Art Therapy Research" published by The American Art Therapy Association, Inc. Mundelein, IL.

Jerry C. Long (TCHRED) is a member of the Leadership Fund for Teacher Educators, Association of Teacher Educators.

Jean A. Marrow (TCHRED) served as the 1991-92 director for Project A.I.M. (Assessment in Mathematics), an Eisenhower Grant for \$43, 836.

Carol F. Marshall (ERLYCH) is the vice president/ president-elect of Kansas Child Care Training Opportunities, a statewide in-service training network that is supported by \$250,000 annual SRS block grants from federal sources. She is also vice president for Infancy, the Kansas Association of Childhood Education International.

Judith McConnell Falk (ERLYCH) attended the National Association of Early Childhood Teacher Educators Conference in New Orleans, Nov. 11-15, where she presented the paper "Perceptions of Gender as Viewed in the Language of Young Children." She also served as Coordinator of the Authors' Table at the conference.

Paul McNab (PSY/SPC) was reappointed by the Kansas Board of Education to a second three-year term as Higher Education Representative on the State Advisory Council for Special Education.

Joella Mehrhof and Kathy Ermler (HPER) received a grant from the Kansas Association of Health, Physical Education, Recreation and Dance. The grant will be used to partially fund the summer 1993 conference: Teaching All Kids Educational Activities In Motion (TAKE AIM). TAKE AIM is an activity based conference for practicing physical educators.

Teresa A. Mehring (ASSIST. DEAN) presented "Attention Deficit-Hyperactivity Disorder Diagnosis and Intervention: A Shared Responsibility" at The International Conference on Learning Disabilities in Kansas City.

Karen C. Nelson's (PSY/SPC) paper "Curriculum Compacting: A Model for Teacher/Specialist/Parent Collaboration" was published in the May/June '92 issue of *Understanding Our Gifted*. She also conducted the inservice "Panning for Gold" for classroom teachers for USD 259

Wichita during the summer of 1992.

Leo W. Pauls (JIEE) attended the fall All-Boards meeting of the National Council for the Accreditation of Teacher Education (NCATE). Pauls represents the International Reading Association on NCATE's Unit Accreditation Board. Pauls and Jack Cassidy of Millersville University in Pennsylvania presented newly revised reading standards to NCATE's Specialty Areas Study Board. These were approved for implementation in 18 months. Pauls also attended the National Conference of the College Reading Association, in St. Louis, Nov. 5-8.

Bill Samuelson (TCHRED) is currently working on a project involving One Room School Museums in Kansas in the hope of developing an inventory, listing or network.

John O. Schwenn (Chair PSY/SPE) and Mark B. Goor (PSY/SPE) co-authored the paper "Using Pupil Feedback to Assess the Impact of Teacher Presentation Style on Mainstreamed Students with Learning Disabilities," which was published in Vol. 3, N. 2 of *Learning Disabilities*.

John O. Schwenn (PSY/SPC) was appointed by the Kansas Commissioner of Education to represent all the Regents institutions on the Kansas Comprehensive System of Personnel Development.

Jack D. Skillett (DEAN) has been elected to serve a third three-year term on the USA/China Teacher Education Consortium Board.

Hutchinson's annual Juco Basketball Clinic on Sat., Oct. 24th, featured Ron Slaymaker (ATHLE) as the speaker.

Richard L. Watson (TCHRED) authored the Kansas Reading Association Board Position Statement on "Meeting the Needs of At-Risk Students."

Kenneth A. Weaver (PSY/SPE) attended the American Psychological Association's National Convention in Washington D.C., August 14-18. He also published the article "Elaborating Selected Statistical Concepts With Common Experience" in Vol. 19, N. 3 of *Teaching of Psychology*.

Eugene W. Werner (EDADM) presented the paper "OPA & OBE: Essential Skills for Faculty Readiness" at the Kansas Association of School Boards annual convention in Wichita in Dec. of 1992.

HELP US STAY IN TOUCH

Let The Teachers College and your ESU friends know where you are and what you're doing! Please return this questionnaire to The Teachers College Newsletter, Campus Box 4036, Emporia State University, Emporia, KS 66801-5087.

Social Security Number	Class Year
Phone	Division
New Address	Degree
Promotions, Job Change, Awards, Activities, etc.	
Please return entire page.	

TEACHERS COLLEGE FUND FOR EXCELLENCE

TTC Fund for Excellence is intended for scholarships, enrichment activities, and other critical needs. If you would like to make a tax deductible contribution, please make check payable to The Teachers College Fund for Excellence and mail to:

The Teachers College
Fund for Excellence
ESU Foundation--1500 Highland
Emporia, KS 66801-5018
316-341-5278

\$ _____

- ☐ My employer will match my gift.
Enclosed is a matching gift form.
- ☐ I would like information regarding planned giving.
- ☐ I would like information on establishing an endowed fund.

Donor Recognition Clubs

Annual gifts to ESU in the following amounts qualify donors for special recognition.

\$1,000 & abovePresident's Club
\$500KSTC Club
\$250Black and Gold Club
\$100.....Anniversary Club
Up to \$100.....Century Club

The Teachers College Newsletter is published twice a year by the Jones Institute for Educational Excellence.

Advisory Board

Dean's Academic Leadership Council
Kimera Maxwell, CEO
Emporia State University Foundation
Vicki N. Cumiskey
Assistant Director, University Relations

Editor

Beth Saiki-Olsen
Jones Institute for Educational
Excellence

Assistant Editor

Dollia Frizell

Layout and Design

Shawn Honea
University Relations

Photography

James R. Garvey
University Photography

Printing

Carl Hoffmans
Director, ESU Press

The Teachers College
Campus Box 4036
Emporia State University
Emporia, KS 66801-5087

Nonprofit Org.
U.S. Postage
PAID
Emporia, Kansas
66801-5087
Permit No. 203