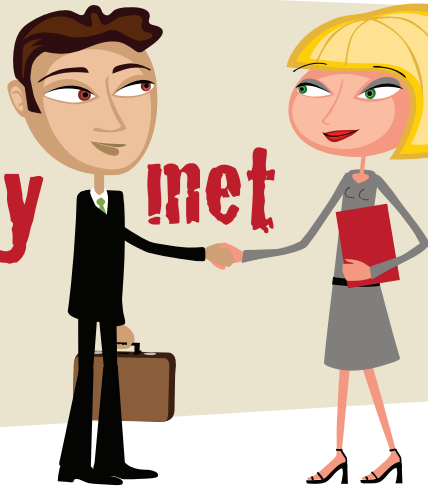


A One-Day Workshop

When  
Harry met Ruby



## Effective Classroom Management for New Teachers

**It is no secret!** An effective teacher is a good classroom manager who knows the effective teacher *manages* the classroom and an ineffective teacher *disciplines* the classroom. Effective teachers know by teaching procedures and routines they provide the structure and expectations students of diverse backgrounds need.

**This workshop** is specially designed for beginning teachers with three years of experience or less. Based on the work of Harry Wong and some of the key points of Ruby Payne's *A Framework for Understanding Poverty*, this workshop provides the keys to positive classroom management as a foundation for student achievement.

### Featured Presenter

**Carol Hailey** has taught middle and high school English for over 30 years. She served as the English department chair at Shawnee Mission North High School for 18 years and is currently the K-12 Reading/Language Arts Resource Specialist for Shawnee Mission USD 512. Carol conducts staff development for the district, assists schools in developing school improvement and AYP plans, and serves on school improvement teams. In addition, she is a consultant for the College Board and a Ruby Payne cadre trainer for *A Framework for Understanding Poverty*.



**JONES INSTITUTE**  
for Educational Excellence

**Audience:**

K-12 Classroom Teachers

**Presenter:**

Carol Hailey

**Date:**

Friday, December 4, 2009

**Time:**

8:30 a.m. - 3:30 p.m.

**Location:**

Jones Institute for  
Educational Excellence  
The Earl Center at  
Emporia State University  
1601 State, Emporia, KS  
(See website for directions)

**Cost:**

\$95 (includes lunch and refreshments)

**Graduate credit is available  
(0.5 hr)**

Enrollment is limited to 40 participants



EMPORIA STATE  
UNIVERSITY™

AA/EOE

Register online at [www.emporia.edu/jones](http://www.emporia.edu/jones) or call 1-877-378-5433